



Making Connections

Conceptual Design for Under the Viaduct

North Central Choice Neighborhood
Philadelphia, PA 19122
July 2016 | Project Number 2015-50

COMMUNITY DESIGN
COLLABORATIVE

Strengthening neighborhoods through design

Making Connections

Conceptual Design for Under the Viaduct

North Central Choice Neighborhood
Philadelphia, PA 19122
July 2016 | Project Number 2015-50

Prepared for **The City of Philadelphia on Behalf of the North Central Choice Neighborhood Grant Partners**

1234 Market Street, 17th Floor
Philadelphia, Pennsylvania 19107

Prepared by **Volunteers of the Community Design Collaborative**

Ballinger, Firm Volunteer

Jake Shoemaker, AIA, Registered Architect
Natalie Amodei, Intern Architect
Jennifer Cappella, Interior Designer
Charlotte DiGiorgio, Assoc. AIA, Arch. Designer
Christina Dreibholz, Registered Architect
Peter Elsbeck, Assoc. AIA, Arch. Designer
Kate Hallinan, Interior Designer
Stacey Lindbloom, Intern Architect
Bonnie Netel, Intern Architect

Ground Reconsidered, Firm Volunteer

Karen Skafte, ASLA, Reg. Landscape Architect
Brad Thornton, ASLA, Reg. Landscape Architect

The Lighting Practice, Firm Volunteer

Helen Diemer, Lighting Designer
David Seok, Lighting Designer
Lauren Tyler, Lighting Designer

Jennie Shanker, Artist

Jeff Carpenter, Artist

International Consultants, Inc., Firm Volunteer

Lou Johnson, Cost Estimator

Printed by



© Community Design Collaborative, 2016



► 1216 Arch Street | First Floor | Philadelphia, PA 19107
ph 215.587.9290 | fx 215.587.9277

cdesignc.org

About Us

Board of Directors

Paul Sehnert, Co-Chair
Richard W. Winston, AIA, Co-Chair
Jody Arena
Alice Berman, AIA
Julie Bush, ASLA
Cheryl Conley
Tavis Dockwiller, ASLA
John Donch, Jr., Esq.
Daryn Edwards, AIA
Noel Eisenstat
Eva Gladstein
Jeff Goldstein, AIA
Kevin Gray
Lee Huang
Megan McGinley, AIA
Darrick M. Mix, Esq.
Carol Horne Penn
Kira Strong
Paul A. Vernon, RA
Rebecca Johnson, *Ex-officio*

Staff

Elizabeth K. Miller, Executive Director
Linda Dottor, AICP
Robin Kohles, AIA
Heidi Segall Levy, AIA
Danielle Parnes
Jessica Scipione

Making progress? Please remember to share any news about your project with us and recognize our contribution to the project.

- Keep us informed about project milestones like approvals, funding, hiring design consultants, and construction.
- Invite us to groundbreakings and ribbon cuttings. Acknowledge our contribution in program remarks and collateral.
- Recognize our contribution to the project in press materials with a written acknowledgement.
- Notify us when using plans, renderings, or other illustrations from this report in press or marketing materials. Credit them, "Courtesy of the Community Design Collaborative."

For over twenty years, the Community Design Collaborative has demonstrated the importance of design in community revitalization. The Collaborative provides pro bono preliminary design services to nonprofit organizations in greater Philadelphia and offers meaningful volunteer opportunities to design professionals.

The Collaborative's early design assistance helps nonprofits succeed in the challenging arena of community and economic development. Our teams of volunteer design professionals work side by side with communities to put their visions down on paper and advance to the next stage: gaining support, raising funds, and building projects.

Founded in 1991 as a program of AIA Philadelphia, the Collaborative is an independent 501(c) (3) nonprofit organization. We have over 1,300 volunteers who have contributed more than 100,000 hours of community service and a portfolio of over 600 preliminary design projects for nonprofits.

The Collaborative relies on a variety of resources to carry out its mission. This year, we are receiving support from the Philadelphia Office of Housing and Community Development, Philadelphia Department of Commerce, Philadelphia Water Department, William Penn Foundation, and AIA Philadelphia.

The Collaborative also relies on individual and corporate donations through annual sponsorships, Community Champions memberships, our annual giving campaign, and two annual fundraisers - the Bowling Ball, a night of bowling fun for firms, friends, and fans, and Leverage, a celebration of design and community. Finally, the Collaborative's volunteers donate thousands of hours of in-kind professional services each year.

The Community Design Collaborative's products are intended to provide visual concepts and to assist in the preliminary phase of project design and planning. All drawings and construction budgeting figures are limited to conceptual design and are neither intended nor may be used for construction. The Community Design Collaborative and our project volunteers assume no responsibility or liability for our services including the recommendations of our volunteers, the technical accuracy of our work product or for any unauthorized use.

To learn more about the Collaborative, visit cdesignnc.org or connect with us at facebook.com/cdesignnc and [@cdesignnc_tweets](https://twitter.com/cdesignnc).



Table of Contents

- **Making Connections**
Conceptual Design for Under the Viaduct
2015-50

Introduction

- Overview
- Project Location
- Context

Existing Conditions

- Context Diagrams
- Site Plans and Photos

Conceptual Design

- Precedent Images
- Proposed Site Narratives and Drawings
- Opinion of Probable Cost

Description of Services

- Value of Services Donated
- Letter of Agreement
- Client Application

Introduction

► Making Connections Conceptual Design for Under the Viaduct 2015-50

Overview

Making Connections: Conceptual Design for Under the Viaduct presents design solutions to address the challenges presented by the SEPTA Viaduct in the North Central neighborhood of Philadelphia. The goal is to provide improvement strategies that will reduce crime, increase safety, and help to meld the fabric of the neighborhood by encouraging pedestrian access. Three underpasses beneath the Viaduct have been identified as the basis of this design exercise. The underpasses are just north of the Temple University train station and include: W. Norris Street between N. 9th and N. 10th Streets, Diamond Street at N. 10th Street, and W. Susquehanna Avenue between N. 10th and N. 11th Streets. The design solutions address not only these particular intersections, but also linkages to tie them together. While site specific, these designs are also intended to act as prototypes for other similar underpass locations throughout the City.

The North Central community, with support from the City of Philadelphia Office of Housing and Community Development (OHCD), is aiming to implement the design as part of the ongoing Choice Neighborhoods Transformation Plan for North Central Philadelphia. Assistance was requested from the Community Design Collaborative (Collaborative) in addressing the varied issues affecting the underpass sites.

The design services provided by the Collaborative volunteers result from information gathered from several sources, including community members and key stakeholders. The design team met with representatives from the following organizations and agencies: OHCD, Asociacion Puertorriquenos en Marcha (APM), Norris Community Resident Council, SEPTA, Mural Arts, Temple University, Philadelphia Housing Authority, the Mayor's Office of Transportation and Utilities and the Philadelphia Department of Streets. In addition to these key partner meetings, one community task force meeting and two broader community meetings provided pertinent insight and information relating to the community's interests and concerns. In addition, over 300 surveys were completed by community members as an additional means of gathering input. All of this information helped to inform both the overall design approach as well as the design of each intersection.

To address the community's primary concerns of safety, lighting, trash, and linking the neighborhood, the overarching theme of 'passage' was used. Rather than being construed as barriers, as they are currently, the underpasses beneath the Viaduct were thought of as a potential means of passage, drawing pedestrians through to create a sense of movement from one side to the other. Several site strategies were developed to reinforce the sense of pulling the community together despite the physical nature of the Viaduct. They include the following:

- Cleaning and greening both public and privately owned vacant lots in close proximity to the Viaduct.
- Adding both benches and trash receptacles at bus stops within the immediate vicinity of the Viaduct.
- Hanging a series of community designed banners from existing street poles on W. Norris Street, Diamond Street, and W. Susquehanna Street to reinforce the east/west passage beneath the Viaduct, therefore reconnecting the neighborhood, and to create identity and relay a sense of pride for the community.
- Repainting the crosswalks to be 3-dimensional, an approach that will slow traffic and help to create an identity along this corridor. The crosswalk painting is designed to continue onto the sidewalk before fading away, a gesture that beckons toward the next intersection.

The design team chose to address each of the three specific underpasses in a different fashion due to the varied physical nature of each. Although site specific designs are proposed, the results provide a kit of parts that allows other communities to select appropriate elements as future underpasses throughout the City are considered for site

Introduction

► **Making Connections**
Conceptual Design for Under the Viaduct
2015-50

Overview

improvements. Rather than creating one prototype that needs to adapt to various physical requirements, this approach provides a variety of designs that can respond to a multitude of conditions. In doing so, the Norris site utilized the theme of 'stream', the Diamond site was designed as a 'beacon', and the Susquehanna site centered on the idea of the 'front porch'. Each design is described more specifically in the conceptual design section of this report.

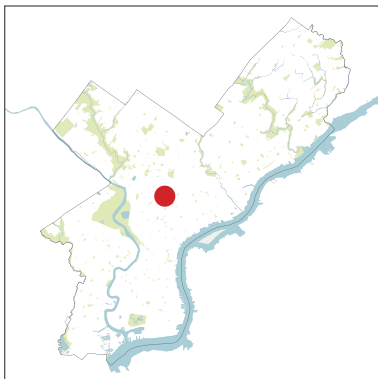
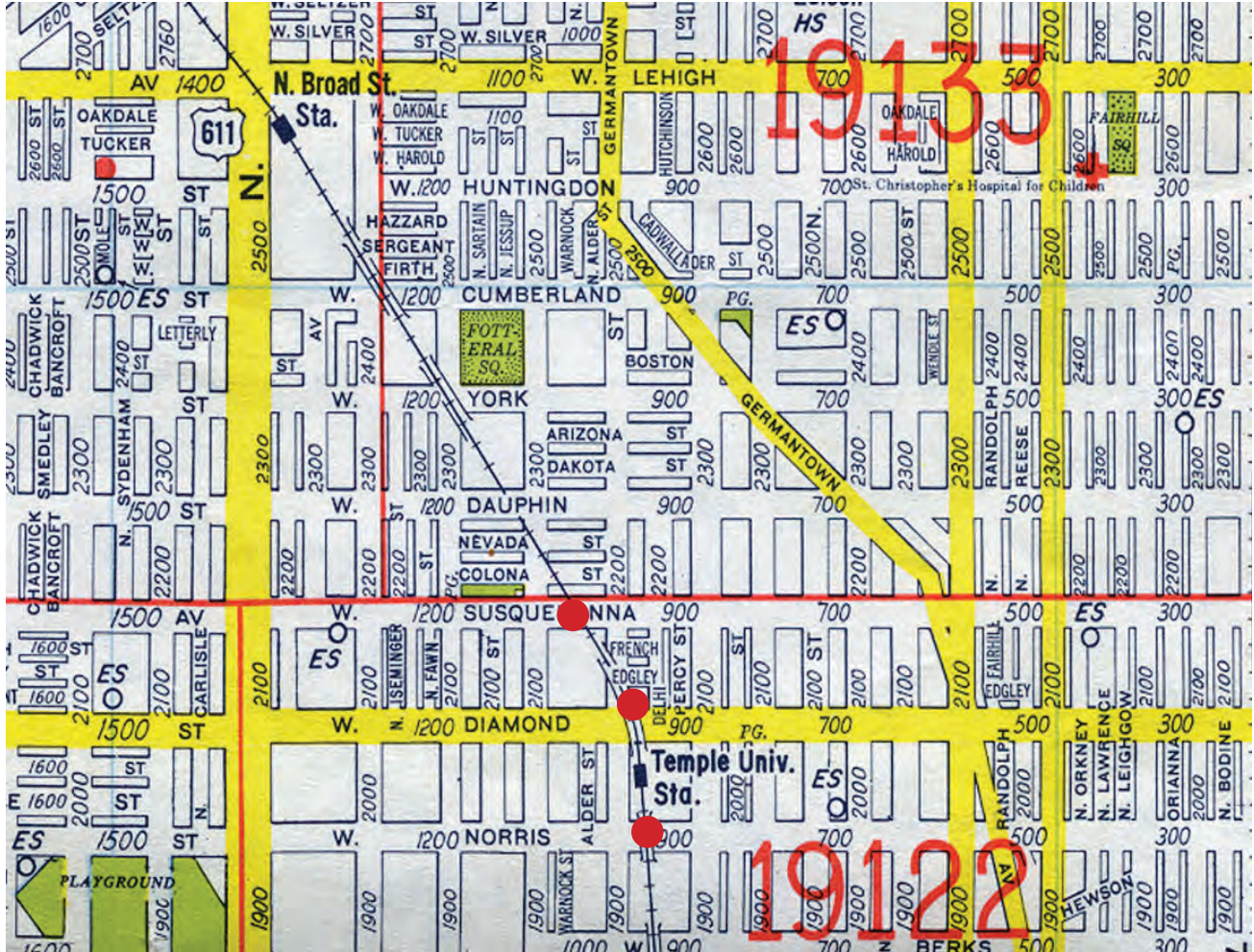
The design documents and opinion of probable cost that the volunteer design team has produced will enable the North Central community, with assistance from the City, to pursue the necessary funding required. Once funding is in place, design professionals may be hired to further develop the designs with community input, and implement the vision of ***Making Connections: Conceptual Design for Under the Viaduct.***

Project Location

► Making Connections

Conceptual Design for Under the Viaduct

2015-50



North Central Community

North Central Choice Neighborhood

Philadelphia, PA 19122

North Central Philadelphia

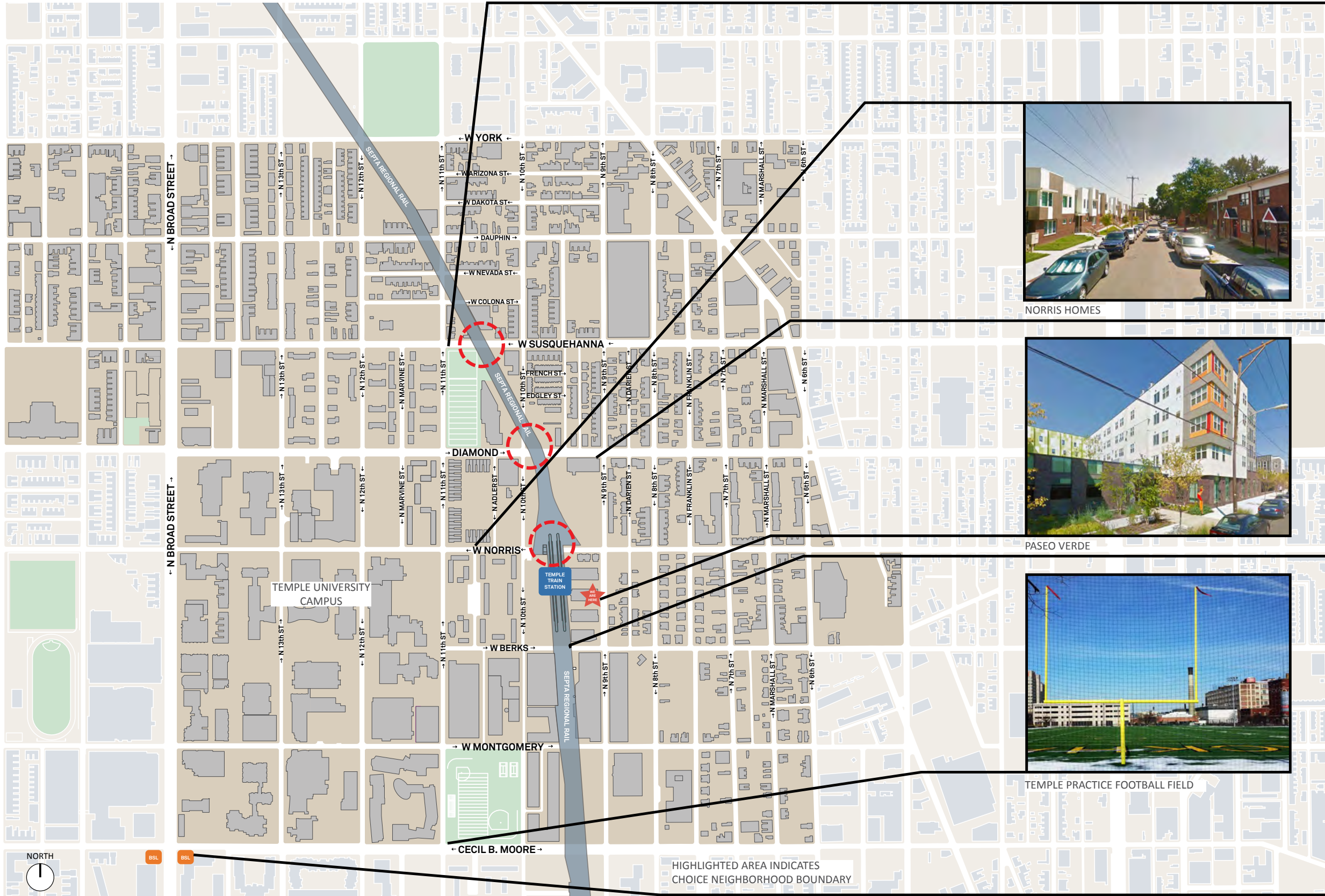
Client Category: Housing and Community Development

Project Category: Open Space

Introduction

Context

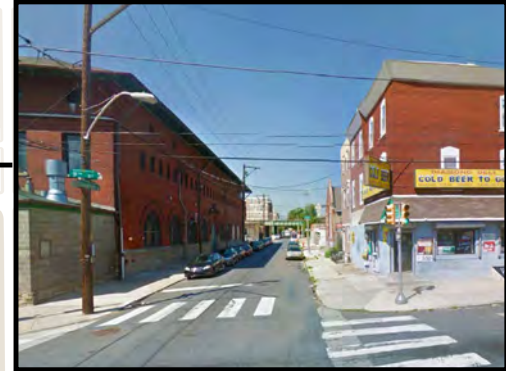
- **Making Connections**
Conceptual Design for Under the Viaduct
2015-50



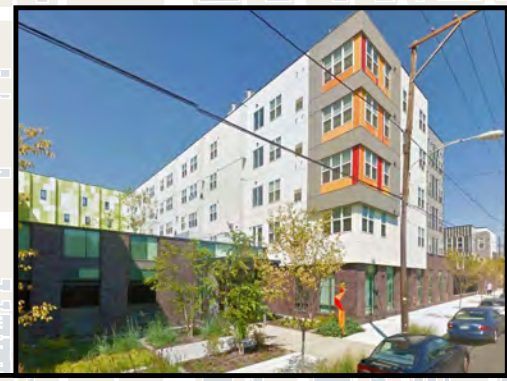
TEMPLE PRACTICE FOOTBALL FIELD



NORRIS HOMES



PGW BUILDING



PASEO VERDE



TEMPLE SEPTA STATION



TEMPLE PRACTICE FOOTBALL FIELD



BROAD STREET SUBWAY STATION

Making Connections: Conceptual Design for Under the Viaduct Existing Context Plan

Project number
2015-50
Date
June 6, 2016
Scale
NTS



BALLINGER
Ground Reconsidered



The Community Design Collaborative's products are intended to provide visual concepts and to assist in project design and planning. All drawings are limited to conceptual design and are neither intended nor may be used for construction. Neither the Community Design Collaborative nor the project volunteers assume responsibility or liability for the technical accuracy of drawings or for any unauthorized use.

Existing Conditions

► **Making Connections**
Conceptual Design for Under the Viaduct
2015-50

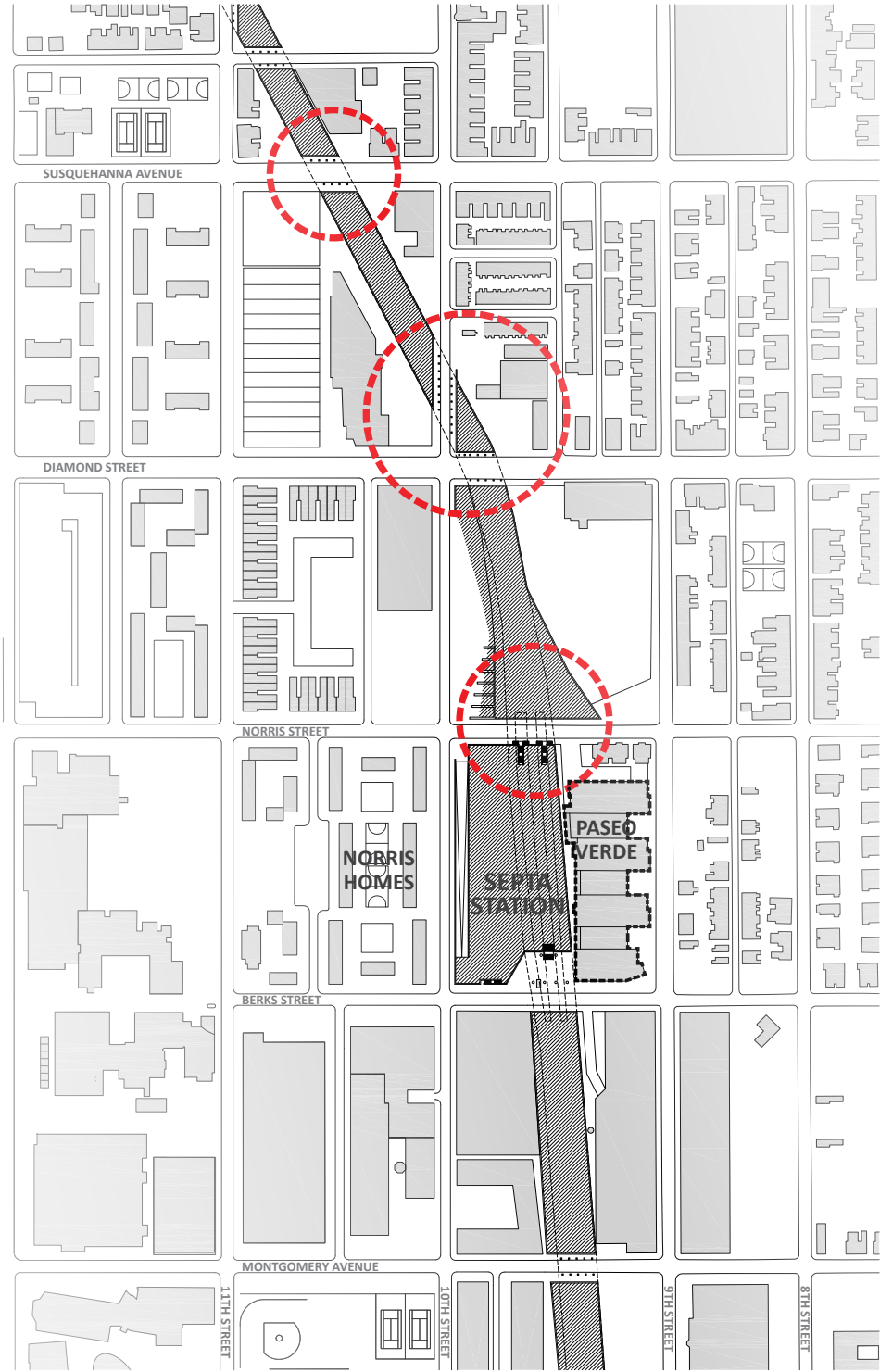
Context Diagrams

Site Plans and Photos

Site Plan

This diagram gives an overview of the location of the viaduct underpasses that are the focus of this project in the context of the street grid, adjacent buildings and the mass of the railroad embankments.

- EARTH EMBANKMENT
- UNDERPASS SITE
- PASEO VERDE



Ownership

This diagram is a catalog of generalized parcel ownership in the vicinity of the rail corridor and viaduct underpasses. The information was sourced from City of Philadelphia public databases.

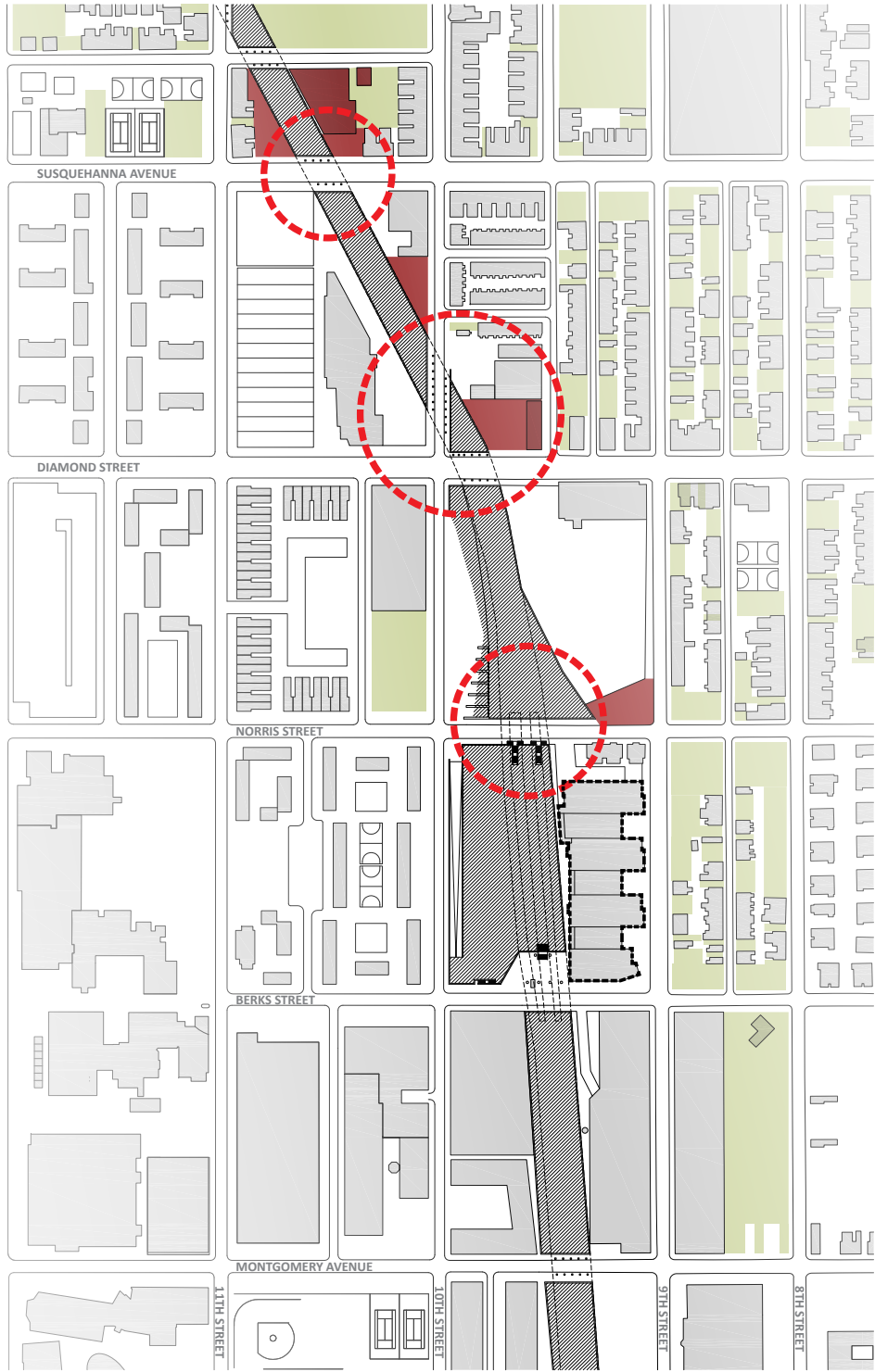
- SINGLE FAMILY OR SMALL INVESTOR
- LARGE SCALE RESIDENTIAL DEVELOPER
- PRIVATE COMMERCIAL
- RELIGIOUS INSTITUTION
- COMMUNITY CENTER
- CITY OF PHILADELPHIA
- PHILADELPHIA GAS WORKS
- TEMPLE
- SEPTA
- READING RAILROAD COMPANY



Vacant Lots

The following diagram analyzes the surrounding neighborhood and calls attention to lots that are both vacant with vegetation and vacant containing some form of a building or structure.

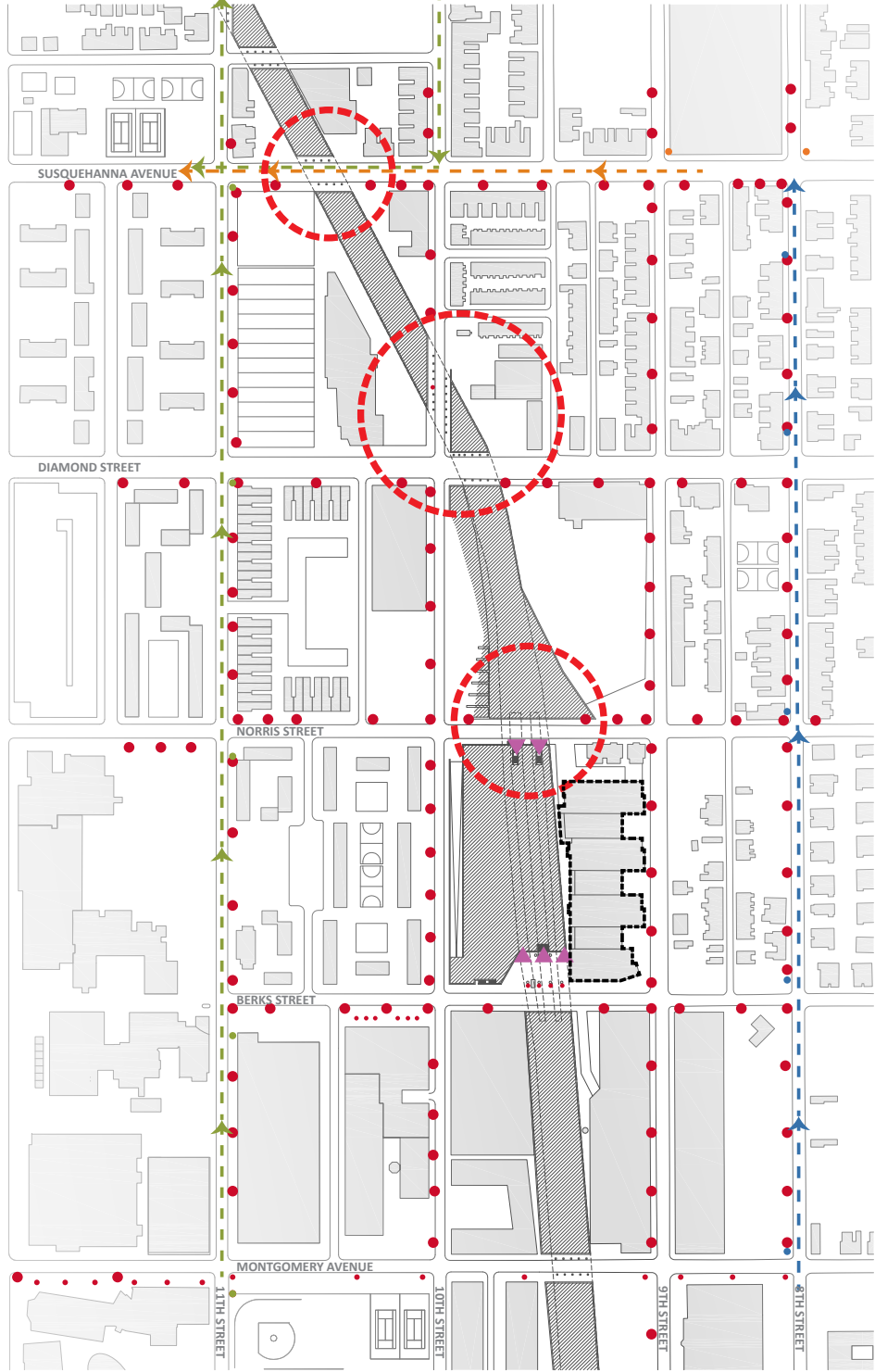
- VACANT LOTS
- LOTS WITH VACANT STRUCTURES

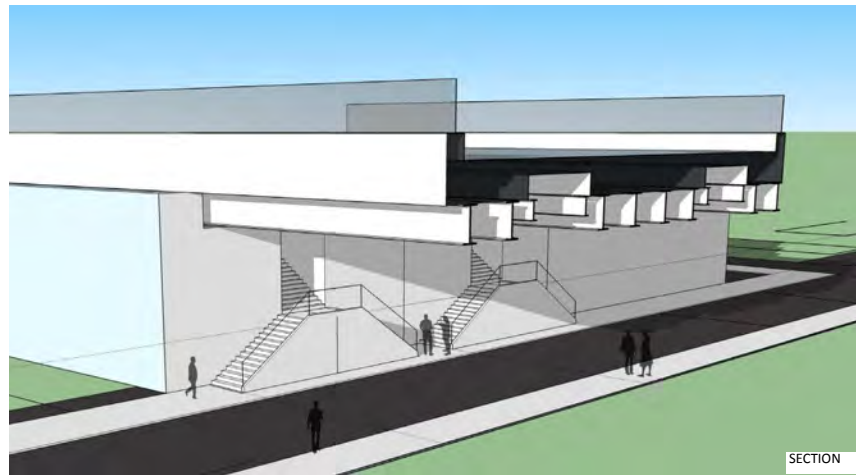


Street Elements

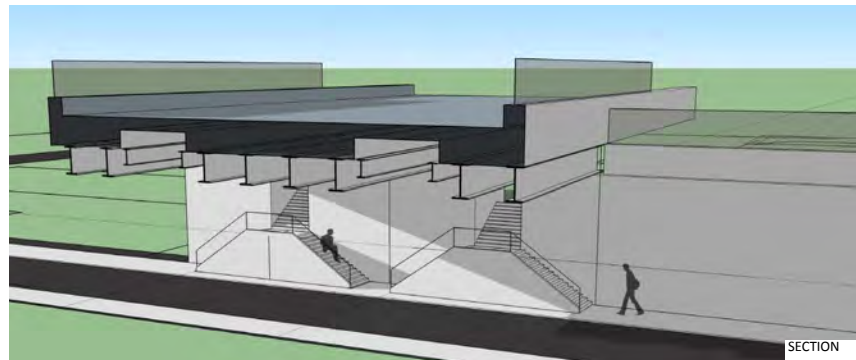
The following diagram identifies locations of bus stops in correlation to the provision of street lights. Additionally, the locations are shown along the general bus routes and entry points to the SEPTA Regional Rail - Berks Station.

- BUS ROUTE 23
- BUS ROUTE 39
- BUS ROUTE 47
- STREET LIGHT
- ROUTE 23 STOP
- ROUTE 39 STOP
- ROUTE 47 STOP
- REGIONAL RAIL ENTRY





SECTION



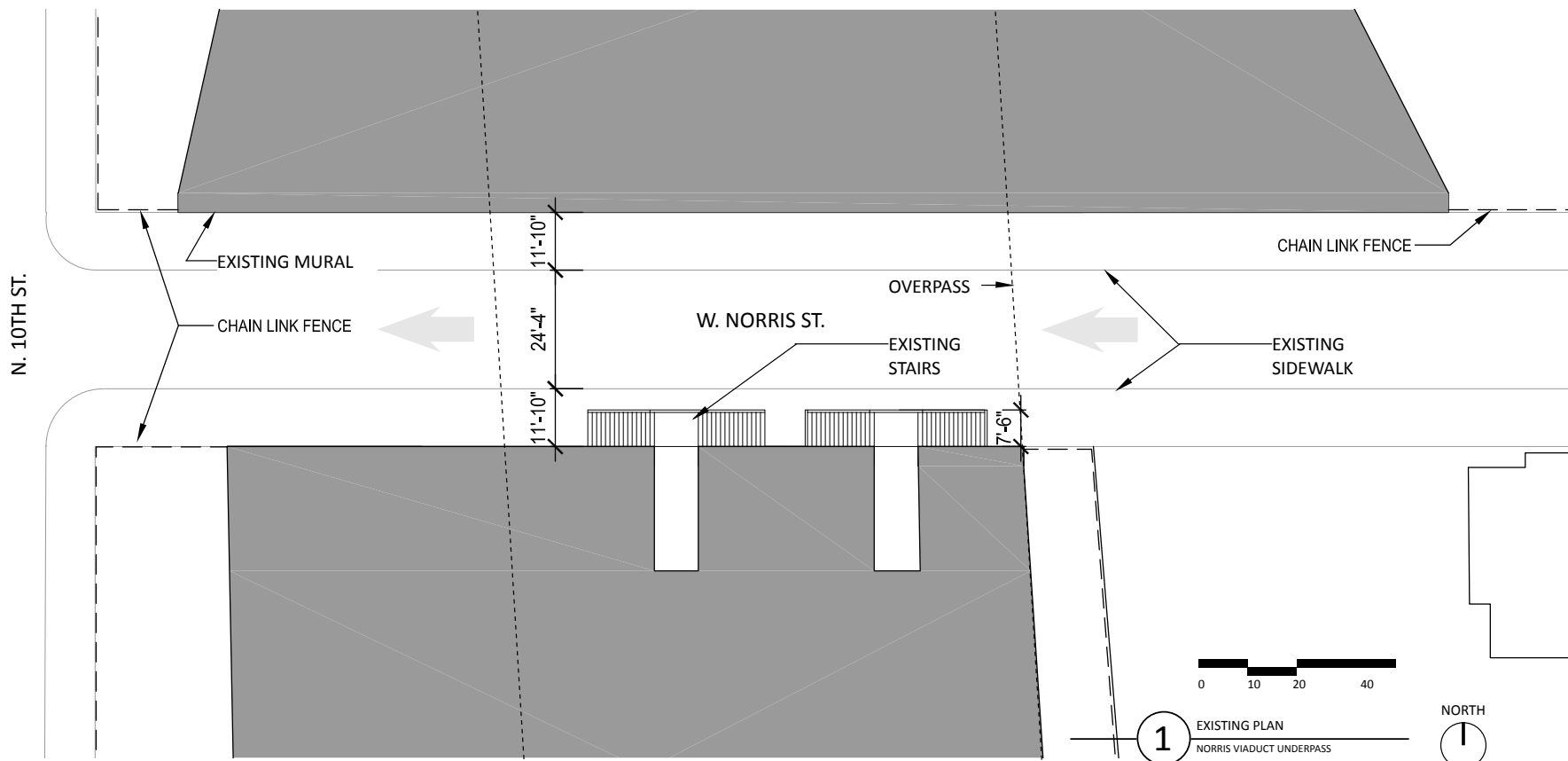
SECTION



LOOKING WEST ON NORRIS STREET AT 9TH STREET



LOOKING EAST ON NORRIS STREET AT 10TH STREET



NW CORNER AT 10TH AND NORRIS ST.
SEPTA



NE CORNER AT 9TH AND NORRIS ST.
PHILA GAS WORKS



SW CORNER AT 10TH AND NORRIS ST.
SEPTA (NORRIS RESIDENTS BEYOND)



SE CORNER AT 9TH AND NORRIS ST.
PASEO VERDE

**COMMUNITY DESIGN
COLLABORATIVE**

Project number
2015-50
Date
June 6, 2016
Scale
As Noted

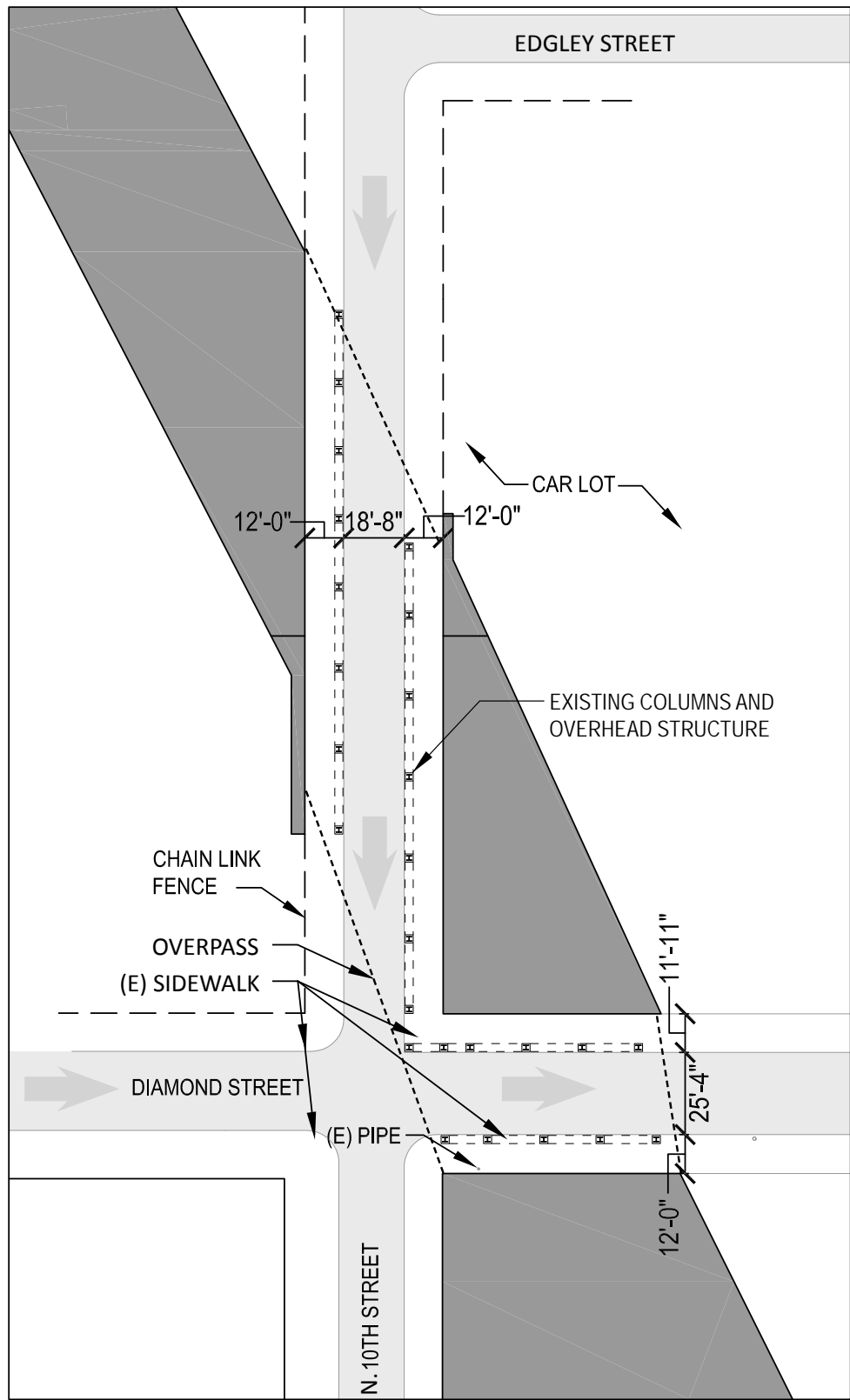
Making Connections: Conceptual Design for Under the Viaduct Norris Viaduct Underpass - Existing Conditions



BALLINGER
Ground Reconsidered



The Community Design Collaborative's products are intended to provide visual concepts and to assist in project design and planning. All drawings are limited to conceptual design and are neither intended nor may be used for construction. Neither the Community Design Collaborative nor the project volunteers assume responsibility or liability for the technical accuracy of drawings or for any unauthorized use.



1 EXISTING PLAN
DIAMOND VIADUCT UNDERPASS

NORTH
0 10 20 40

COMMUNITY DESIGN
COLLABORATIVE

Project number
2015-50
Date
June 6, 2016
Scale
As Noted

Making Connections: Conceptual Design for Under the Viaduct

Diamond Viaduct Underpass - Existing Conditions



VIEW AT INTERSECTION OF DIAMOND VIADUCT



LOOKING EAST ON DIAMOND STREET AT N. 10TH STREET.



NE ON N. 10TH ST.
CITY OF PHILA



NW ON N. 10TH ST.
SEPTA & PRIVATE BUSINESS



NE ON N. 10TH ST.
PRIVATE BUSINESS



SE ON DIAMOND ST.
CITY OF PHILA



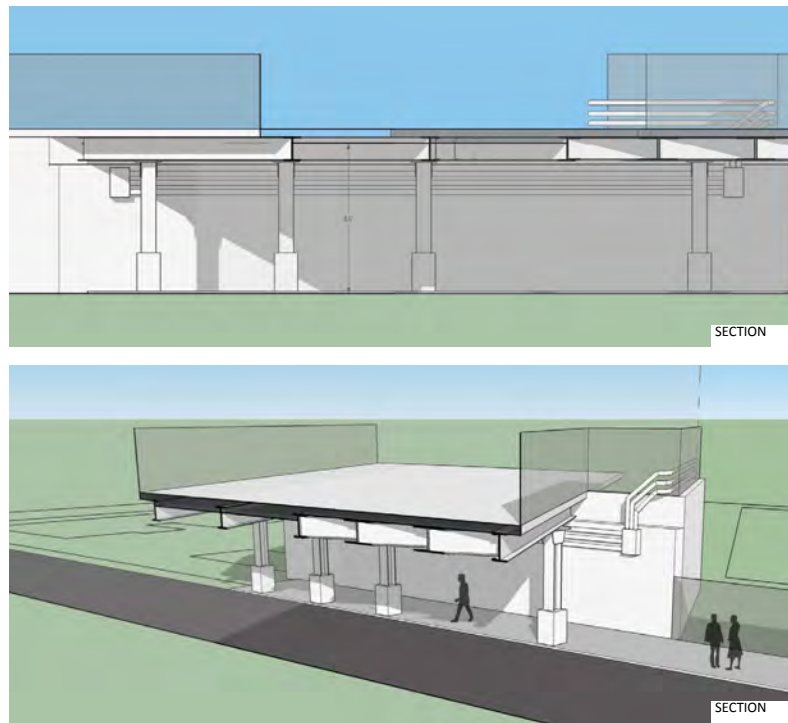
VIEW AT INTERSECTION OF DIAMOND VIADUCT



BALLINGER
Ground Reconsidered



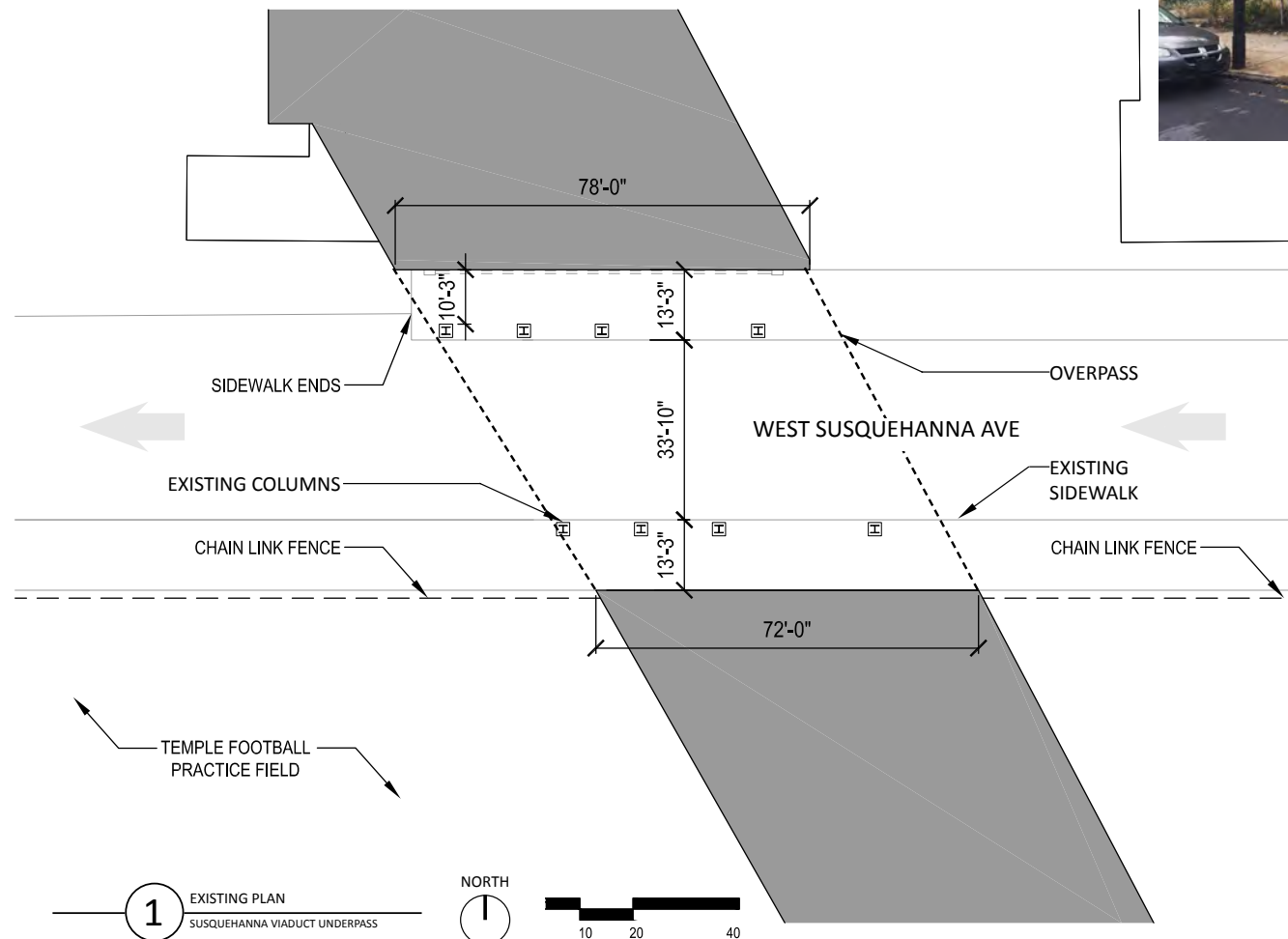
The Community Design Collaborative's products are intended to provide visual concepts and to assist in project design and planning. All drawings are limited to conceptual design and are neither intended nor may be used for construction. Neither the Community Design Collaborative nor the project volunteers assume responsibility or liability for the technical accuracy of drawings or for any unauthorized use.



LOOKING EAST ON SUSQUEHANNA AVE TOWARDS 10TH ST



LOOKING WEST ON SUSQUEHANNA AVE TOWARDS 11TH ST



EAST ON SUSQUEHANNA AVE



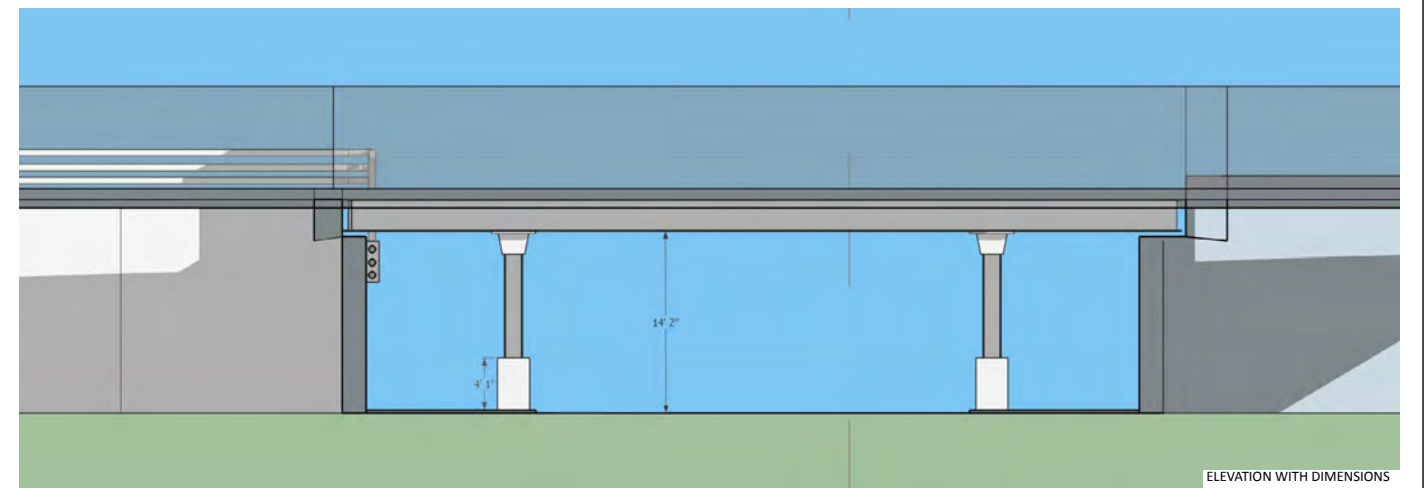
SW CORNER ON SUSQUEHANNA AVE
TEMPLE UNIVERSITY



NW CORNER ON SUSQUEHANNA AVE
PRIVATE / DEVELOPER (CRUD, LLC)



NE CORNER ON SUSQUEHANNA AVE
EBENEZER BAPTIST CHURCH



ELEVATION WITH DIMENSIONS

**COMMUNITY DESIGN
COLLABORATIVE**

Project number
2015-50
Date
June 6, 2016
Scale
As Noted

Making Connections: Conceptual Design for Under the Viaduct Susquehanna Viaduct Underpass - Existing Conditions



BALLINGER
Ground Reconsidered



The Community Design Collaborative's products are intended to provide visual concepts and to assist in project design and planning. All drawings are limited to conceptual design and are neither intended nor may be used for construction. Neither the Community Design Collaborative nor the project volunteers assume responsibility or liability for the technical accuracy of drawings or for any unauthorized use.

Conceptual Design

► **Making Connections**
Conceptual Design for Under the Viaduct
2015-50

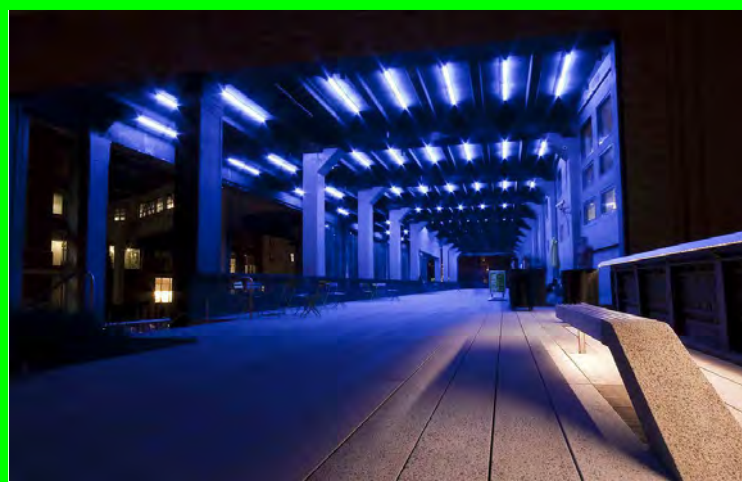
Precedent Images

Proposed Site Narratives and
Drawings

Opinion of Probable Cost



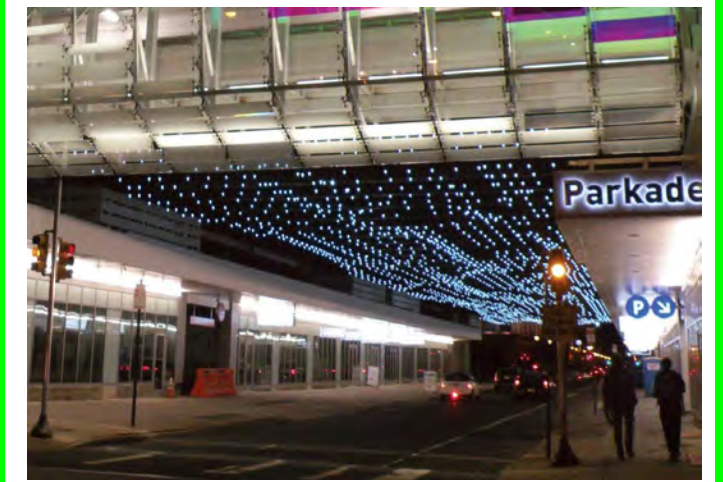
1



2



3



4



5



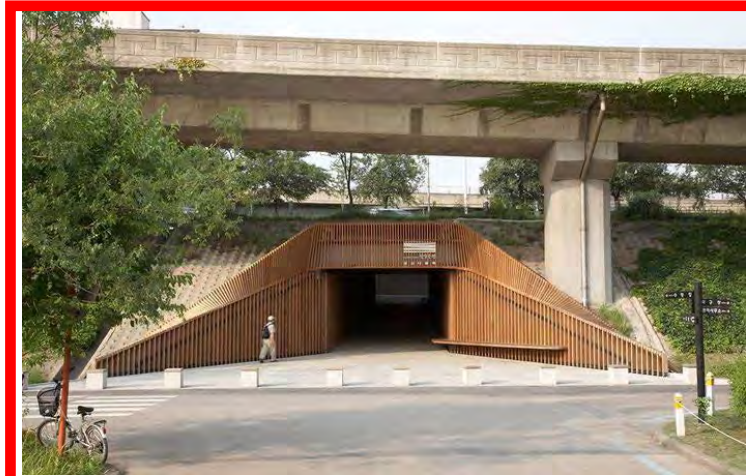
6



7



8



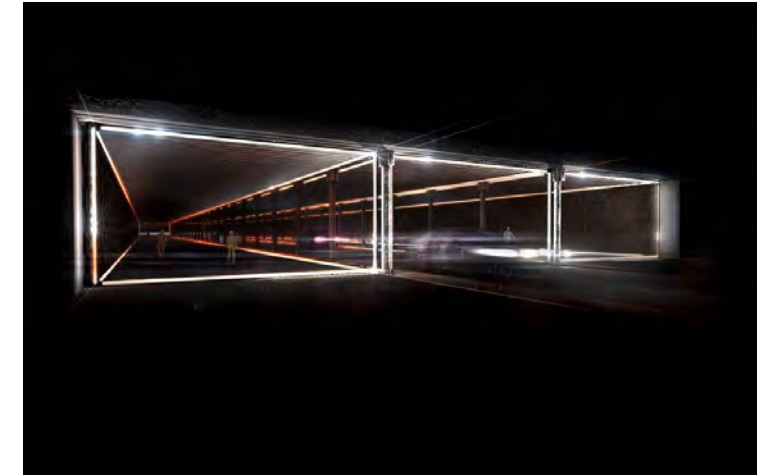
9



10



11



12

LEGEND:
POSITIVE RESPONSE MORE
NEGATIVE RESPONSE LESS

COMMUNITY DESIGN
COLLABORATIVE

Project number
2015-50
Date
June 6, 2016
Scale

Making Connections: Conceptual Design for Under the Viaduct
Precedent Images with Community Response



BALLINGER
Ground Reconsidered



The Community Design Collaborative's products are intended to provide visual concepts and to assist in project design and planning. All drawings are limited to conceptual design and are neither intended nor may be used for construction. Neither the Community Design Collaborative nor the project volunteers assume responsibility or liability for the technical accuracy of drawings or for any unauthorized use.



13



14



15



16



17



18



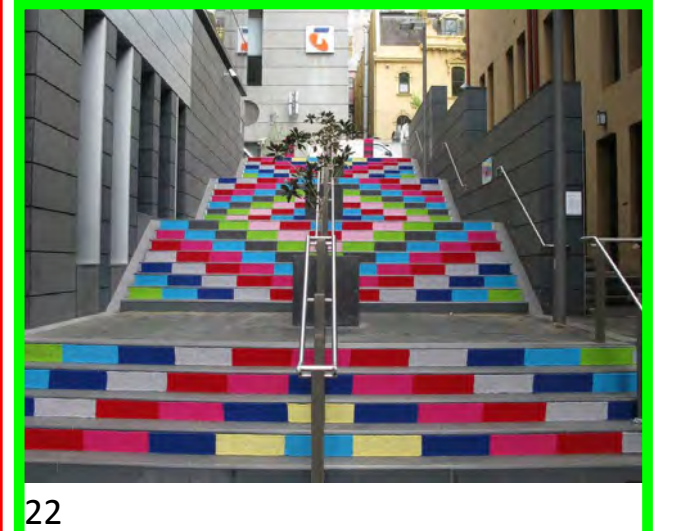
19



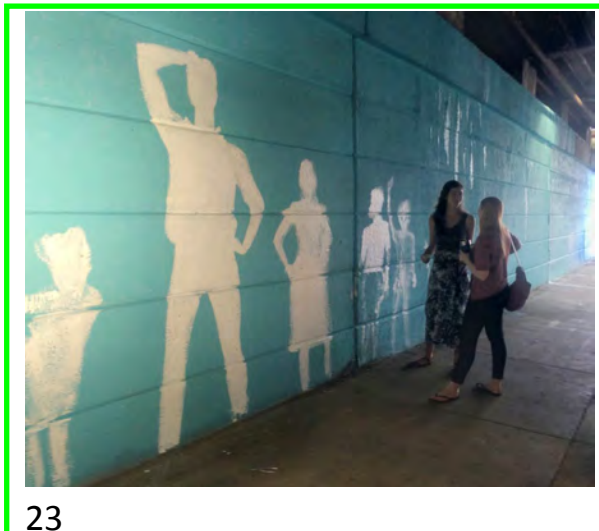
20



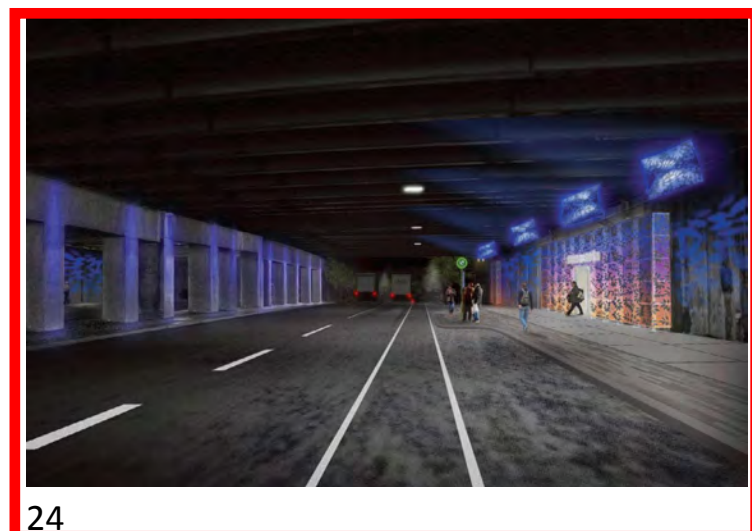
21



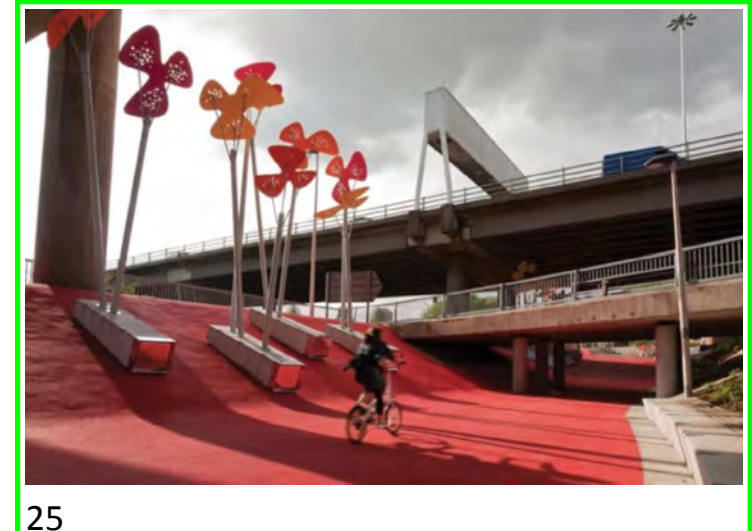
22



23



24



25



26

LEGEND: MORE LESS
POSITIVE RESPONSE
NEGATIVE RESPONSE

COMMUNITY DESIGN
COLLABORATIVE

Project number
2015-50
Date
June 6, 2016
Scale

Making Connections: Conceptual Design for Under the Viaduct
Precedent Images with Community Response

Asociación Puertorriqueña en Marcha
APM
for everyone
Office of Housing & Community Development

BALLINGER
Ground Reconsidered
the lighting practice

The Community Design Collaborative's products are intended to provide visual concepts and to assist in project design and planning. All drawings are limited to conceptual design and are neither intended nor may be used for construction. Neither the Community Design Collaborative nor the project volunteers assume responsibility or liability for the technical accuracy of drawings or for any unauthorized use.

Conceptual Design

► **Making Connections**
Conceptual Design for Under the Viaduct
2015-50

Norris Viaduct Underpass Narrative

The Norris Viaduct is the tallest and widest of the three viaducts, and is the location of one of the two Temple University Regional Rail stop exits. The design of the Norris Viaduct was inspired by its current transit use, as well as research that revealed that a historic stream flowed through this area before the Viaduct was built. This led to the themes of passage and connectivity informing the programs and character of the design. Since the Viaduct is such a massive scale, the design breaks up the massiveness into human-sized pieces that can be enjoyed by pedestrians and drivers alike.

The focal feature of the Norris design is a full-height, glowing, undulating colonnade on both sides of the street. The repetition of the column elements breaks up the long expanse of wall and creates a sense of grandeur mixed with playful movement. In between the columns are benches for residents to sit and relax on while listening to an oral history of the neighborhood playing from speakers above them. The oral history is intended to be a project taken on by the local community and artists, to record the stories of local residents who have lived in the area through different time periods, and to preserve and share their legacy. The long north wall presents an opportunity for artists, with input from the local community, to paint a mural relating to the history of the site and its residents. This mural will expand on the existing murals at the west end of the wall which depict the Norris Homes which are being rebuilt. To provide the necessary amount of light for pedestrians walking at night, standard city street lights are proposed to be installed on both sides of the street, along with city standard trash receptacles at each corner. Banners designed by the community will hang from the street lights and denote the area as a cohesive and vibrant community.

- Phase 1:
 - o Site Lighting
 - Install standard city street lights with banner arms on both sides of the street. This includes running the electrical conduit and wiring as necessary. An alternate would be to re-use the existing street lights from the Norris Homes which are being rebuilt. Banner arms would need to be added to the existing lamps.
 - o Banners at Street Lights
 - The community will design a series of banners for the street lights, which can be updated for different events or seasons, etc.
 - o Paint Stair Risers
 - Apply colorful image or text decals to stair risers. This can coordinate with the banner designs or be used for wayfinding, etc., as the community decides.
 - o Trash Receptacles
 - Add trash and recycling receptacles. Apply vinyl wrap with similar artwork as is proposed for the mural.
 - o Mural
 - Artists can engage the community to help design, and potentially implement, a mural for the north wall. This includes the cleaning and preparation of the existing wall.
 - o Crosswalk / Sidewalk Painting
 - Paint the street at pedestrian crossing points.
- Phase 2:
 - o Colonnade – Metal Fin Trees
 - Install the sculptural, lighted colonnade.
 - o Benches
 - Install two durable/heavy metal benches on north sidewalk, bolted into place. Benches are to have dividers making it difficult to lay across it.
 - o Speakers
 - Install directional speakers attached to the colonnade located above the benches to play an oral history that is produced by the community.

Conceptual Design

Norris Viaduct Underpass Drawings

► **Making Connections**
Conceptual Design for Under the Viaduct
2015-50

NORRIS VIADUCT STRATEGIES: STREAM

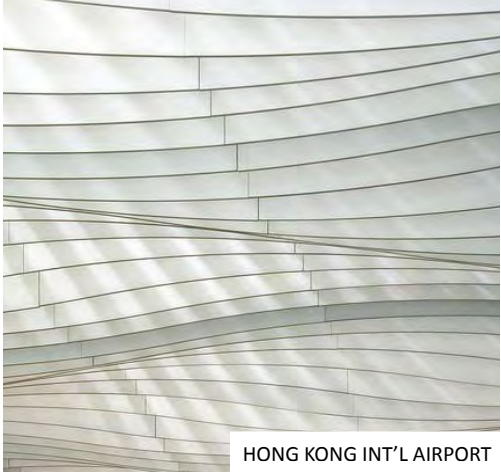


NIGHTTIME VIEW LOOKING WEST ON NORRIS

INSPIRATION IMAGES



HISTORIC LOCATION OF RIVER



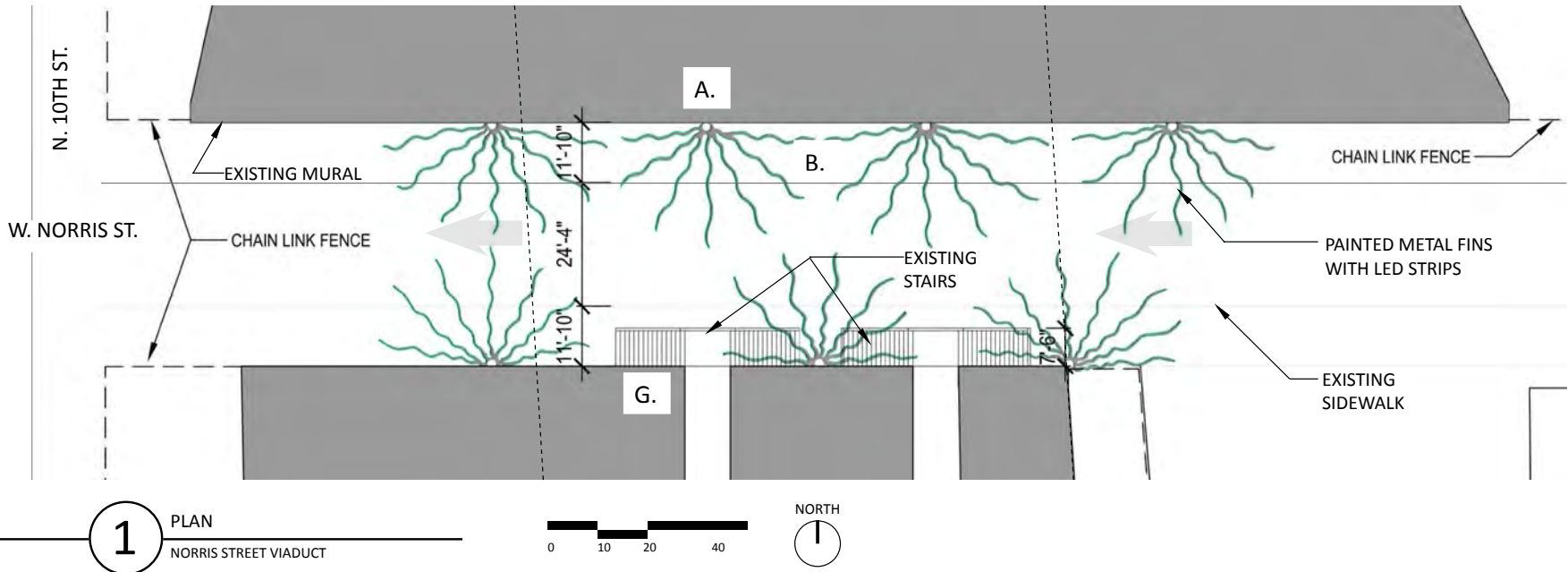
HONG KONG INT'L AIRPORT



URBAN UMBRELLA. NYC

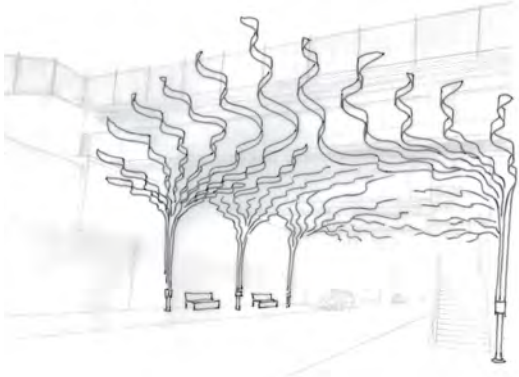


WELCOMING TRANSIT ENTRANCE



The intersection of the viaduct at Norris Street is the location of a historic river that flowed through this area before the train line was built. The design team was inspired by the concept of passage and connectivity that existed in nature on this spot, and let that inspire the form that the proposed installation takes. A repeating colonnade spills out in waves above passers-by, throwing light and shadows on the ground in a playful way, inviting people through it. It breaks a large, scaleless space into smaller human-sized pieces that can be experienced and enjoyed by pedestrians and drivers alike.

PROCESS SKETCHES



COMMUNITY DESIGN
COLLABORATIVE

Project number
2015-50
Date
June 6, 2016
Scale
As Noted

Making Connections: Conceptual Design for Under the Viaduct
Norris Viaduct Underpass - Proposed Design

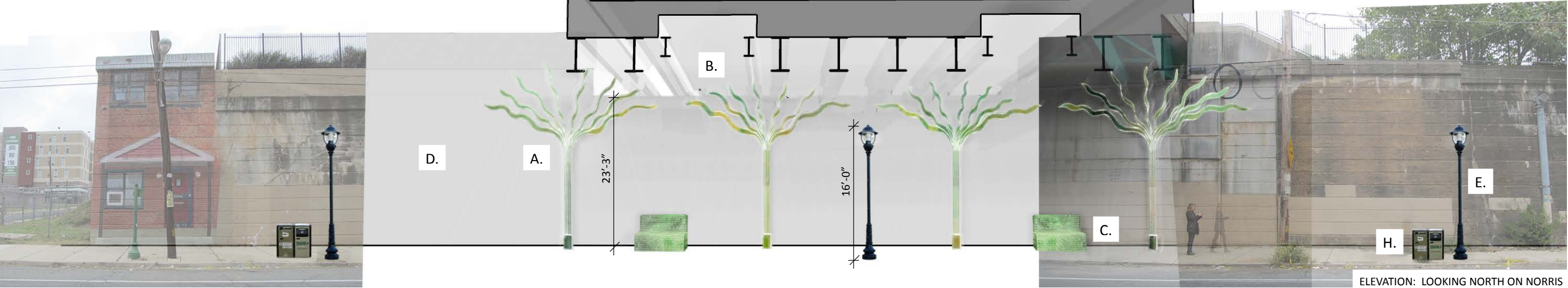


BALLINGER
Ground Reconsidered



The Community Design Collaborative's products are intended to provide visual concepts and to assist in project design and planning. All drawings are limited to conceptual design and are neither intended nor may be used for construction. Neither the Community Design Collaborative nor the project volunteers assume responsibility or liability for the technical accuracy of drawings or for any unauthorized use.

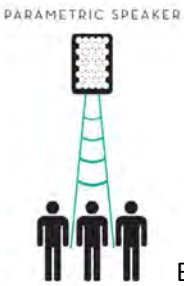
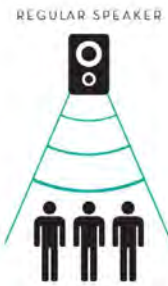
NORRIS VIADUCT STRATEGIES: STREAM



- A. Sculptural colonnade with integral lighting creates a welcoming sense of place.
- B. Directional speakers above sidewalk projecting oral history of local residents.
- C. Benches for residents to rest and listen to the histories or wait for the train.
- D. Repaint wall. Opportunity for Mural Arts mural on north wall that complements existing Norris Homes mural by Jennie Shanker.*

- E. Add standard city street lamps on both sides of the street for full block length.*
- F. Banners on street lamps throughout area for local events and landmarks or other neighborhood messages.*
- G. Use decals on stair risers for colorful messages.*
- H. Provide trash bins at the corners of the block.*

*Phase 1



COMMUNITY DESIGN
COLLABORATIVE

Project number
2015-50
Date
June 6, 2016
Scale
NTS

Making Connections: Conceptual Design for Under the Viaduct
Norris Viaduct Underpass - Proposed Design



The Community Design Collaborative's products are intended to provide visual concepts and to assist in project design and planning. All drawings are limited to conceptual design and are neither intended nor may be used for construction. Neither the Community Design Collaborative nor the project volunteers assume responsibility or liability for the technical accuracy of drawings or for any unauthorized use.

Conceptual Design

► **Making Connections**
Conceptual Design for Under the Viaduct
2015-50

Diamond Viaduct Underpass Narrative

The design of the Diamond Viaduct Underpass centered on the theme of becoming a beacon. As a means of encouraging pedestrian passage, lighting, wall murals, and ground surface treatment have been integrated to engage the pedestrian. The primary concern for this site was the dark tunnel that is created by a lack of lighting, as well as the extensive length of the Viaduct. The space feels more compressed due to the deep structural members that separate the sidewalk from the road. There is an instance at the corner of Diamond Street and N. 10th Street where the deep structure is absent, thus creating an opening that acts as a beacon to draw people through. This glimpse of the newly created wall mural, which is proposed to be applied to an undulating metal slat structure, beckons toward the passersby. LED lighting has been proposed to take advantage of the deep girder that currently exacerbates this claustrophobic feeling. The lighting on the pedestrian side is choreographed to produce a subtly changing colored light washing the undulating slat mural. The undulation provides some relief for the long expanse of the underpass, as the scene changes as one moves through. Additional white LED lighting is proposed on the vehicular side. To accentuate the rhythm created from the slat structure, scoring of the concrete sidewalk is proposed with inserted metal inlays to provide a reflection of the changing colored lighting overhead. Possible alternatives may be to eliminate the metal inlay, or paint lines on the sidewalk instead of scoring, which could be an extension of the proposed 3-dimensional crosswalk painting. This design is thought about in terms of three phases, each outlined below:

- Phase 1:
 - o Lighting
 - Colored LED lighting to be installed for the sidewalk side of the underpass (alternate: white LEDs).
 - o Trash Receptacles
 - Add trash and recycling receptacles placed at the corner of Diamond and N. 10th Streets. Apply wrap with similar artwork as is proposed for the mural.
 - o Crosswalks/Sidewalks
 - Concrete sidewalks to be scored with metal inlays.
 - Paint the street at pedestrian crossing points.
 - o Benches
 - Install a durable/heavy duty metal bench, bolted in place, located along N. 10th Street. Bench is to have dividers making it difficult to lay across it.
- Phase 2:
 - o Lighting
 - White LED lighting to be installed for the vehicular side of the underpass.
- Phase 3:
 - o Mural
 - A mural is to be designed and painted by the community with artists on the installed metal slat structure (alternative is wood slats).
 - o Banners at Street Lights
 - The community will design a series of banners to be installed on the existing streetlights along Diamond Street.
 - o Structure
 - Underside of the structure to be painted white to help brighten the space.

Community interaction is intended to be part of the entire project process. During the first phase, the community may begin to design the content of the mural under the guidance of artists. The graphic is pixelated as it is applied to the slatted structure, to allow for a 'paint-by-numbers' approach as part of Phase Three, also performed by community members. The design of the Diamond Underpass is meant to be as maintenance free as possible. LEDs are recommended due to their extremely long lamp life. The metal slats and mural are protected from the elements by the Viaduct above. With community engagement, the design of the Diamond Underpass becomes not only a beacon to attract pedestrians, but a beacon representing the neighborhood.

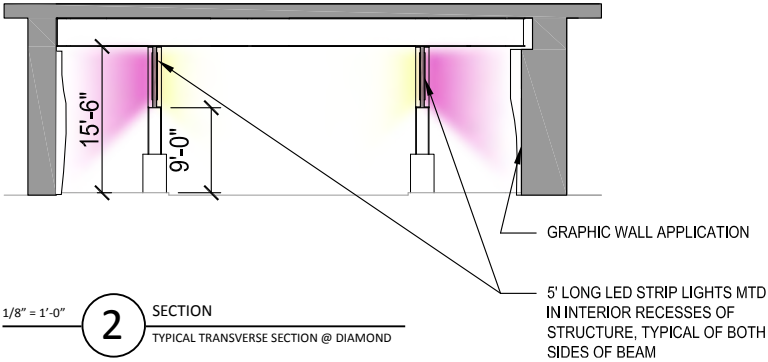
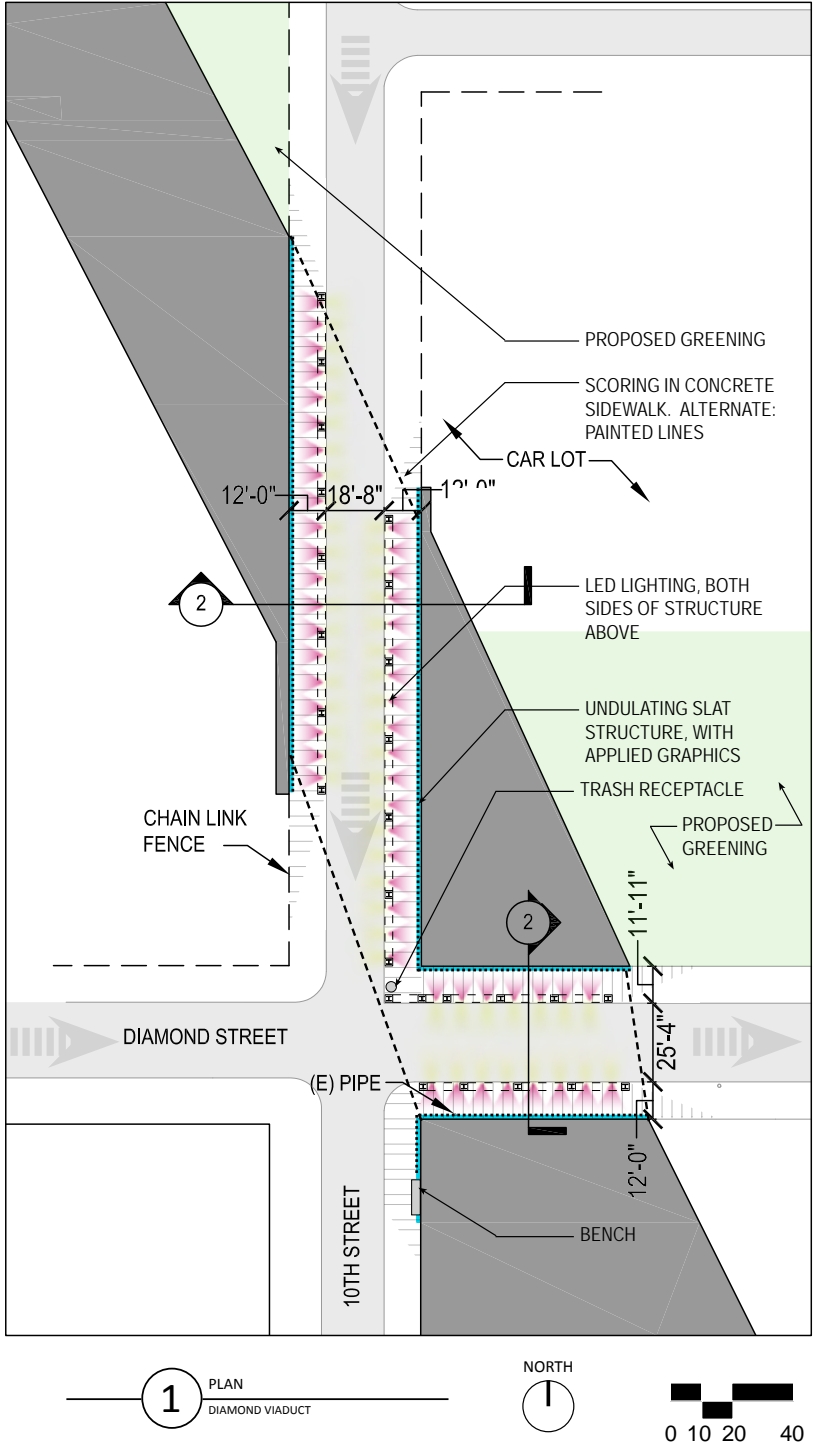
COMMUNITY DESIGN
COLLABORATIVE

Conceptual Design

Diamond Viaduct Underpass Drawings

► **Making Connections**
Conceptual Design for Under the Viaduct
2015-50

DIAMOND VIADUCT STRATEGIES: BEACON



PRECEDENT IMAGE FROM PATHS TO PIER 42



PRECEDENT IMAGE FROM RACE STREET PIER

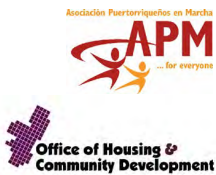


PERSPECTIVE OF PROPOSED DESIGN LOOKING NORTH ON N. 10TH STREET

COMMUNITY DESIGN
COLLABORATIVE

Project number
2015-50
Date
June 06, 2016
Scale
As Noted

Making Connections: Conceptual Design for Under the Viaduct
Diamond Viaduct Underpass - Proposed Design



BALLINGER
Ground Reconsidered

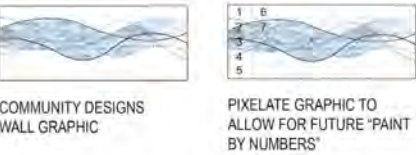


The Community Design Collaborative's products are intended to provide visual concepts and to assist in project design and planning. All drawings are limited to conceptual design and are neither intended nor may be used for construction. Neither the Community Design Collaborative nor the project volunteers assume responsibility or liability for the technical accuracy of drawings or for any unauthorized use.

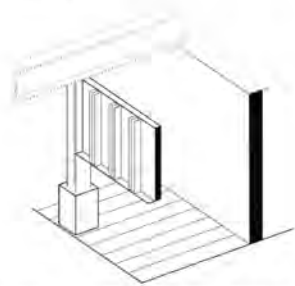
DIAMOND VIADUCT STRATEGIES: BEACON

PHASE 01

OFF-SITE



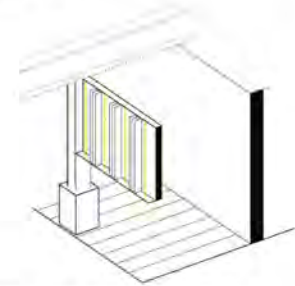
ON-SITE



PROVIDE BENCHES, PEDESTRIAN LIGHTING, GROUND TREATMENT, AND TRASH RECEPTACLES

PHASE 02

ON-SITE



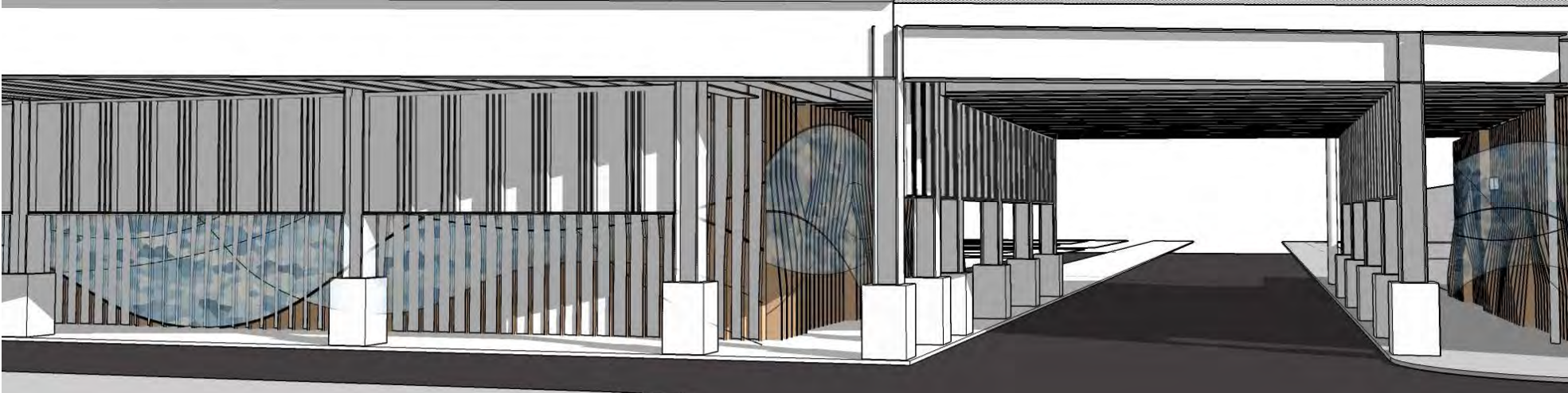
PROVIDE VEHICULAR STREET LIGHTING

PHASE 03

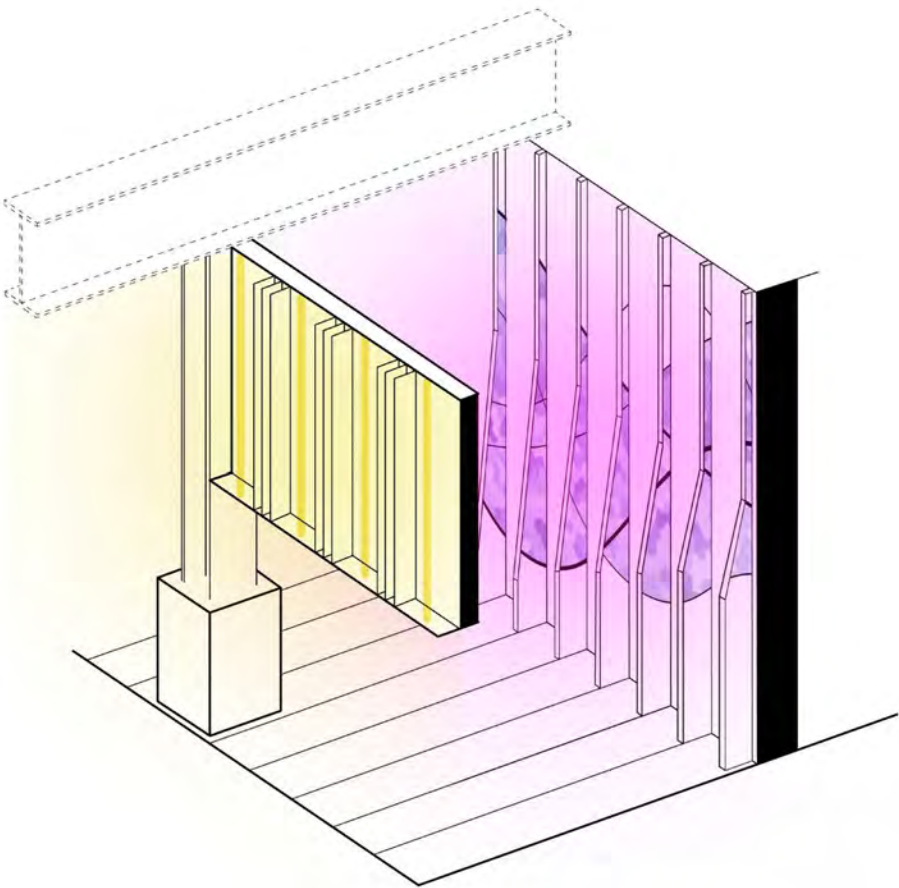
OFF-SITE



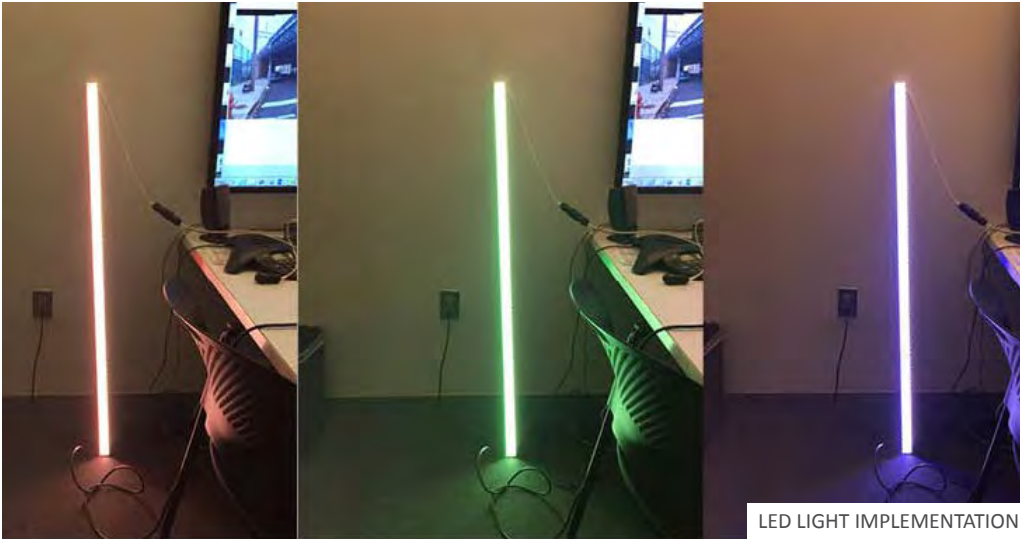
PHASING IMPLEMENTATION PLAN



VIEW AT INTERSECTION OF 10TH STREET AND DIAMOND STREET



AXONOMETRIC OF LIGHT AND SLAT SYSTEM



LED LIGHT IMPLEMENTATION



VIEW AT INTERSECTION AT DUSK

COMMUNITY DESIGN
COLLABORATIVE

Project number
2015-50
Date
June 06, 2016
Scale
NTS

Making Connections: Conceptual Design for Under the Viaduct
Diamond Viaduct Underpass - Proposed Design



The Community Design Collaborative's products are intended to provide visual concepts and to assist in project design and planning. All drawings are limited to conceptual design and are neither intended nor may be used for construction. Neither the Community Design Collaborative nor the project volunteers assume responsibility or liability for the technical accuracy of drawings or for any unauthorized use.

Conceptual Design

► **Making Connections**
Conceptual Design for Under the Viaduct
2015-50

Susquehanna Viaduct Underpass Narrative

At the Susquehanna Viaduct Underpass, the design team was inspired by the neighborhood adjacent to the site, and focused the design to better integrate the Viaduct into the existing residential fabric of this neighborhood. The design is driven by the concept of extending the front porch and taming the urban garden. The front porch relates directly to the neighborhood, while the garden addresses the overgrown, yet green adjacent lots, and employs the concepts of Biophilic Design to positively impact the community. Biophilia suggests there is an innate bond between people and natural environments. There are many studies showing the positive effects nature has on peoples' health and wellbeing, even if it's only a two-dimensional representation of nature.

To create a more human-scale and attractive space, the design team focused on bringing in elements of the front porch (screen door/potted plants) and nature (colors/foliage texture). The features of the design are backlit column enclosures and applied garden murals. For the column enclosures, the organic designs of front porch metal screen doors, seen throughout the neighborhood, are used to create decorative and sculptural enclosures that would serve as lanterns to illuminate the space. These enclosures would be framed metal screens over LED backlit panels with hinged access doors on all sides of the columns to enable site inspection. The murals could show the porch streetscape, with potted plants, windows and window boxes on either side of the street. The mural shown in the rendering is only a concept and the design is intended to be determined by the community. The design also addresses painting the structure above in varying tones of green, or possibly blue, to evoke a lush garden or day sky and adding overhead linear lighting. For the extended site, a huge improvement would be to "Green and Clean" the overgrown lot directly adjacent to the Underpass on the northwest corner and extend the sidewalk to the corner.

- Phase 1:
 - o Site Work:
 - Green and Clean the overgrown site on the northwest corner of the site. This may be proposed as a PHS effort.
 - o Crosswalks/Sidewalks
 - Add paved concrete sidewalk on the northwest corner.
 - Paint the street at pedestrian crossing points.
 - o Trash Receptacles:
 - Add trash and recycling receptacles. Apply vinyl wrap with similar artwork as is proposed for the site mural.
 - o Walls and Structure:
 - Clean and apply fresh coat of paint on side walls and at column bases - a darker color below and lighter above.
 - Paint overhead structure (beams and girders) in four different colors/shades.
 - o Lighting:
 - Linear downlights, surface mounted to the underside of the Viaduct, to be installed in continuous rows running parallel to beams. The LED linear downlight is to have a nominal 2" wide aperture, metal housing, a diffuse acrylic lens to provide an even illumination without seeing individual diodes, and is to be UL rated for outdoor use.
- Phase 2:
 - o Columns:
 - Enclose each column with 4-sided decorative metal panels with a hinged panel on each side for ease of access. These enclosures are to be tamper proof. Metal panels to be backlit by LED fixtures. LED fixtures are to provide continuous illumination along the entire horizontal and vertical surface of the structure. The LED backlight panel is to be UL rated for outdoor use.

Conceptual Design

Susquehanna Viaduct Underpass Narrative

► **Making Connections**
Conceptual Design for Under the Viaduct
2015-50

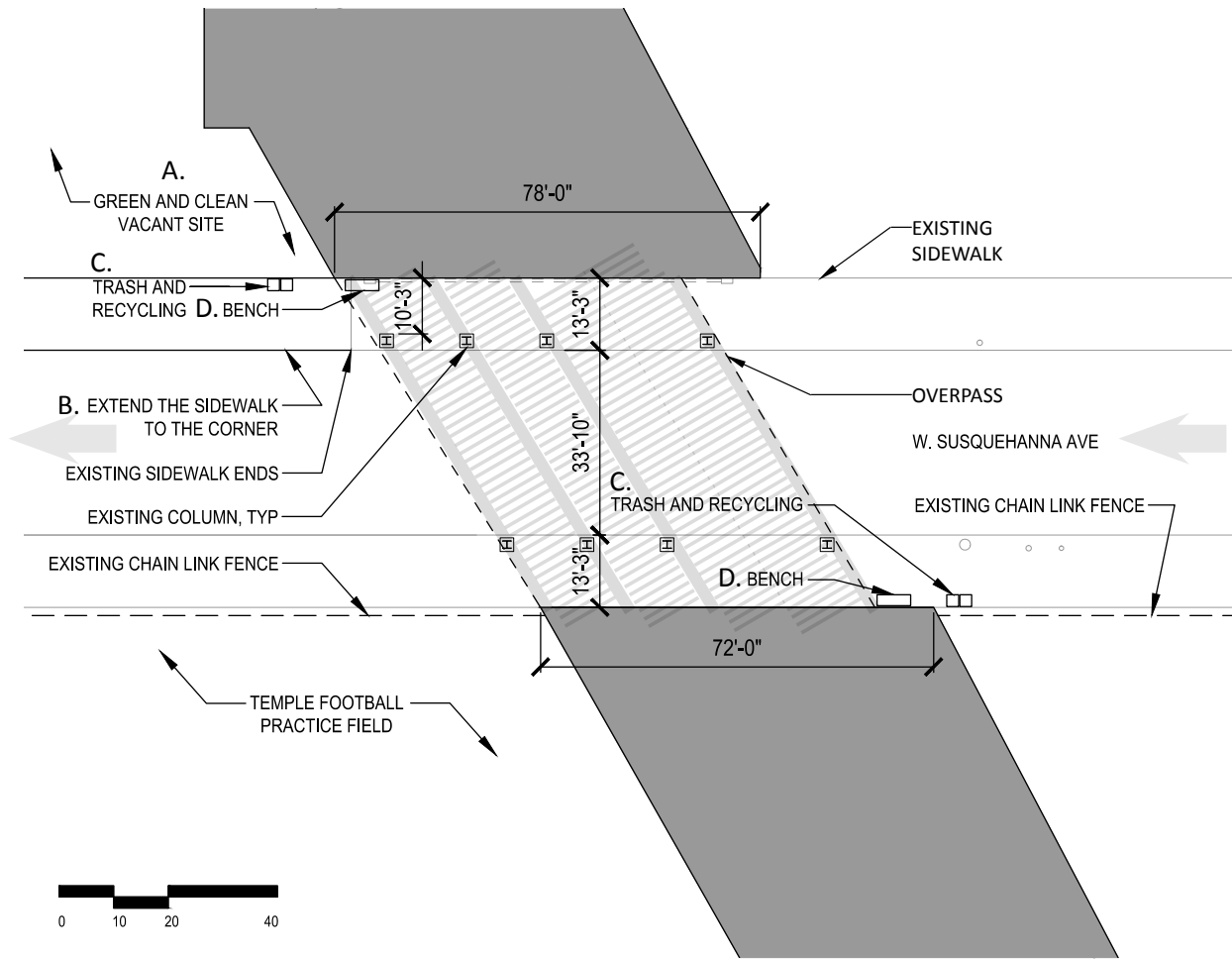
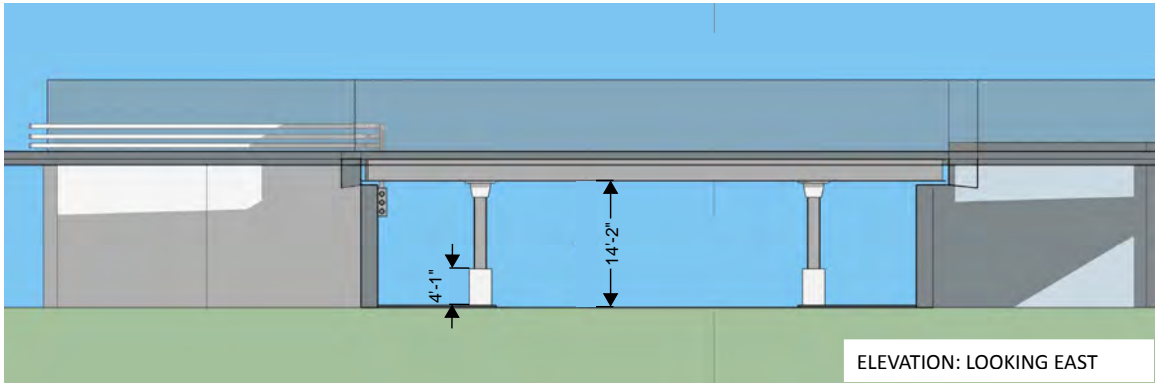
- Phase 3
 - o Mural
 - A “paint-by-numbers” layout to be applied by artists for community members to paint. Certain elements such as the flower pots could be painted on durable substrate and applied to the wall with stand-offs to create depth. The mural design is intended to be determined by the community.
 - o Benches
 - Install two durable/heavy duty metal benches, bolted in place. Benches will have dividers making it difficult to lay across it.
 - o Banners at Street Lights
 - The community will design a series of banners to be installed on the existing street lights along the south side of Susquehanna Avenue.

Conceptual Design

Susquehanna Viaduct Underpass Drawings

► **Making Connections**
Conceptual Design for Under the Viaduct
2015-50

SUSQUEHANNA VIADUCT STRATEGIES: PORCH



1 PLAN
SUSQUEHANNA VIADUCT

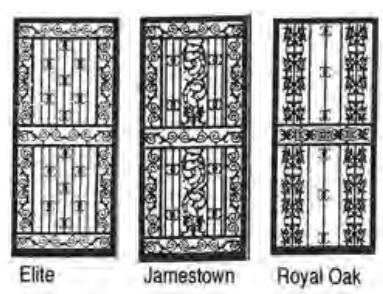


CONCEPT: EXTEND THE FRONT PORCH AND TAME THE URBAN GARDEN

EXISTING IMAGES OF W. SUSQUEHANNA AVE



INSPIRATION IMAGE: SCREEN DOOR MOTIF



CONNECT AND CLEAN THE SITE

- A. Green and Clean the vacant lot on the Northwest Corner through the PHS Landcare Program
- B. Extend the sidewalk to the corner to connect the site
- C. Add trash and recycling receptacles
- D. Add benches to make the site more pedestrian friendly

INSPIRATION IMAGES: PHS LANDCARE PROGRAM



C. BIG BELLY TRASH AND RECYCLING



D. DIVIDED BENCH

COMMUNITY DESIGN
COLLABORATIVE

Project number
2015-50
Date
June 6, 2016
Scale
As Noted

Making Connections: Conceptual Design for Under the Viaduct
Susquehanna Viaduct Underpass - Proposed Design



BALLINGER
Ground Reconsidered



The Community Design Collaborative's products are intended to provide visual concepts and to assist in project design and planning. All drawings are limited to conceptual design and are neither intended nor may be used for construction. Neither the Community Design Collaborative nor the project volunteers assume responsibility or liability for the technical accuracy of drawings or for any unauthorized use.

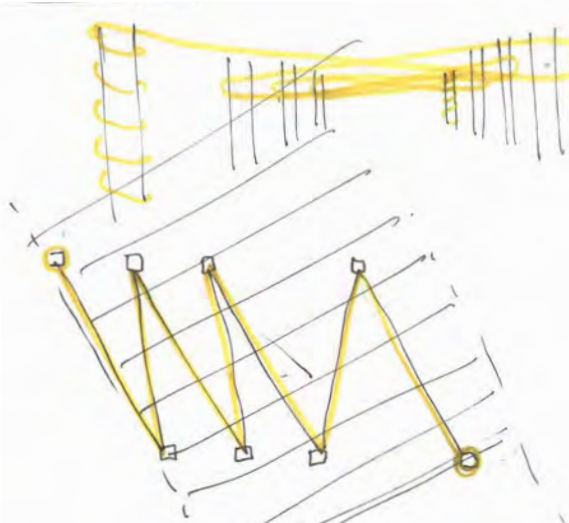
SUSQUEHANNA VIADUCT STRATEGIES: PORCH

APPLY A FRESH COAT OF PAINT

HIGHLIGHT THE EXISTING STRUCTURE

- Accentuate the diagonal geometry of the beams + girders in a variety of shades of color
- Connect the columns with lighting

CONCEPT SKETCH



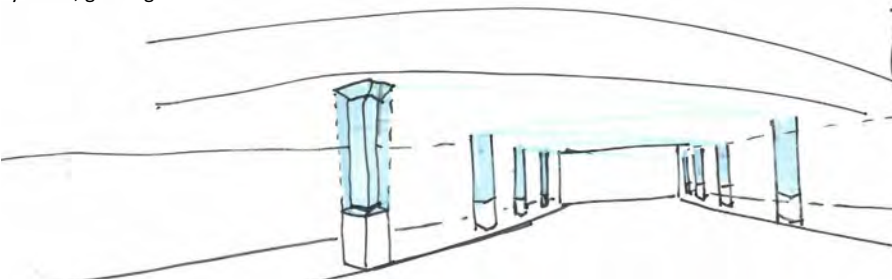
INSPIRATION IMAGES



DRESS THE COLUMNS WITH LIGHT

- Apply a sculptural element/enclosure, drawing from a decorative metal screen door, a familiar element inspired by the context of this site
- Backlight the enclosure to create dynamic, glowing columns

CONCEPT SKETCH



BACK-LIT COLUMN INSPIRATION IMAGES



CONCEPT RENDERING

EMULATE THE GARDEN

- Extend the front porch by painting potted plantings, trellises or other greenery on the side walls. Some elements, such as planters, could be held off the wall on stand-offs.
- Continue the garden motif on the utilitarian trash receptacles

GARDEN MURAL INSPIRATION IMAGES



ENGAGE THE COMMUNITY TO IMPLEMENT

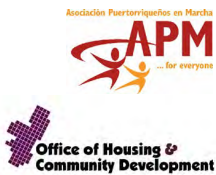
IMPLEMENTATION INSPIRATION IMAGE



COMMUNITY DESIGN
COLLABORATIVE

Project number
2015-50
Date
June 6, 2016
Scale
NTS

Making Connections: Conceptual Design for Under the Viaduct
Susquehanna Viaduct Underpass - Proposed Design



The Community Design Collaborative's products are intended to provide visual concepts and to assist in project design and planning. All drawings are limited to conceptual design and are neither intended nor may be used for construction. Neither the Community Design Collaborative nor the project volunteers assume responsibility or liability for the technical accuracy of drawings or for any unauthorized use.

Conceptual Design

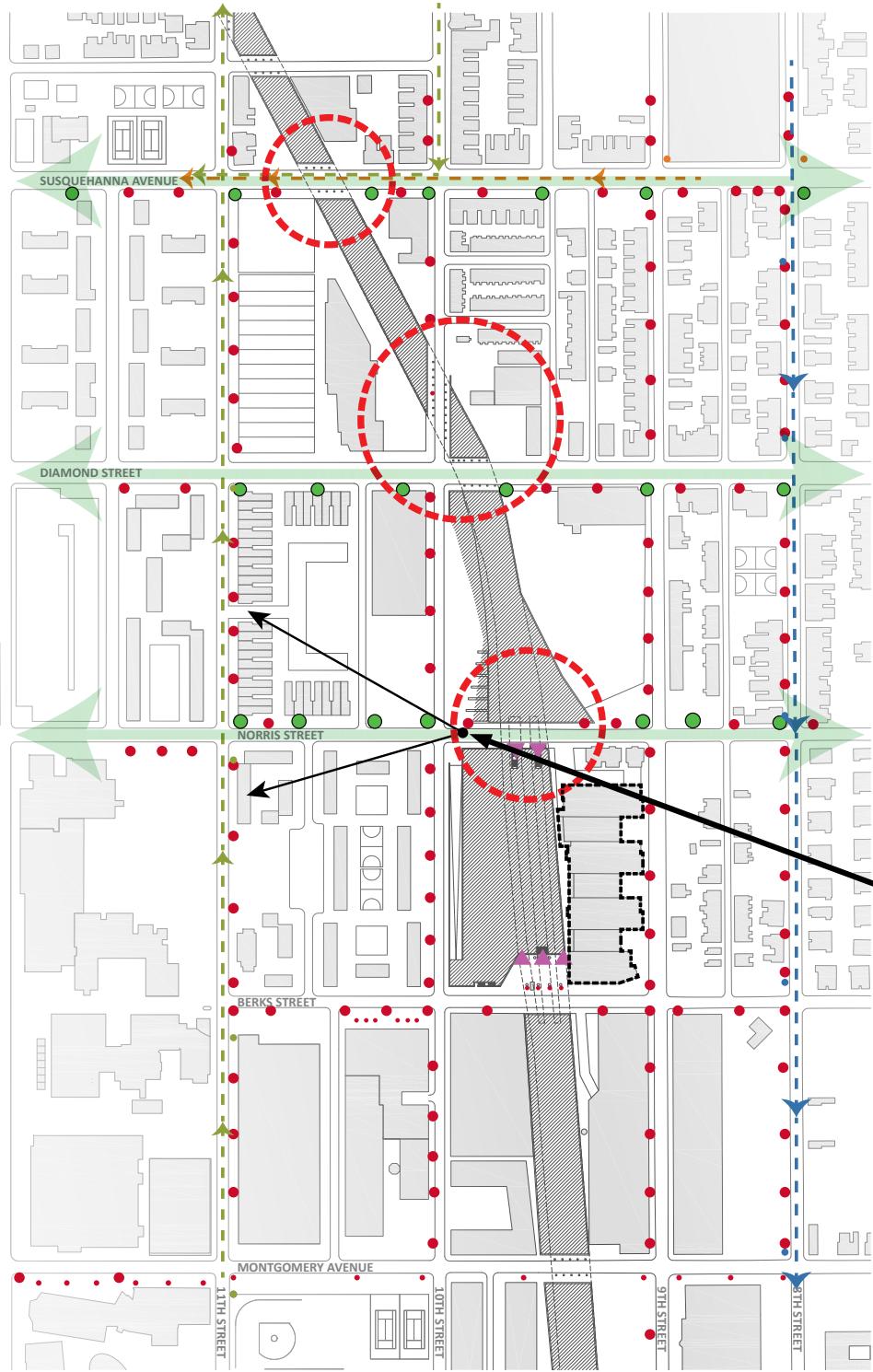
Site Infrastructure
Drawings

► **Making Connections**
Conceptual Design for Under the Viaduct
2015-50

BANNERS

This diagram illustrates the desired East/West connectivity across the Viaduct through a series of banners attached to the street lights. The content of the banners would be community driven as a means of unifying the neighborhood and providing an identity.

- BUS ROUTE 23
- BUS ROUTE 39
- BUS ROUTE 47
- STREET LIGHT WITH BANNER
- STREET LIGHT

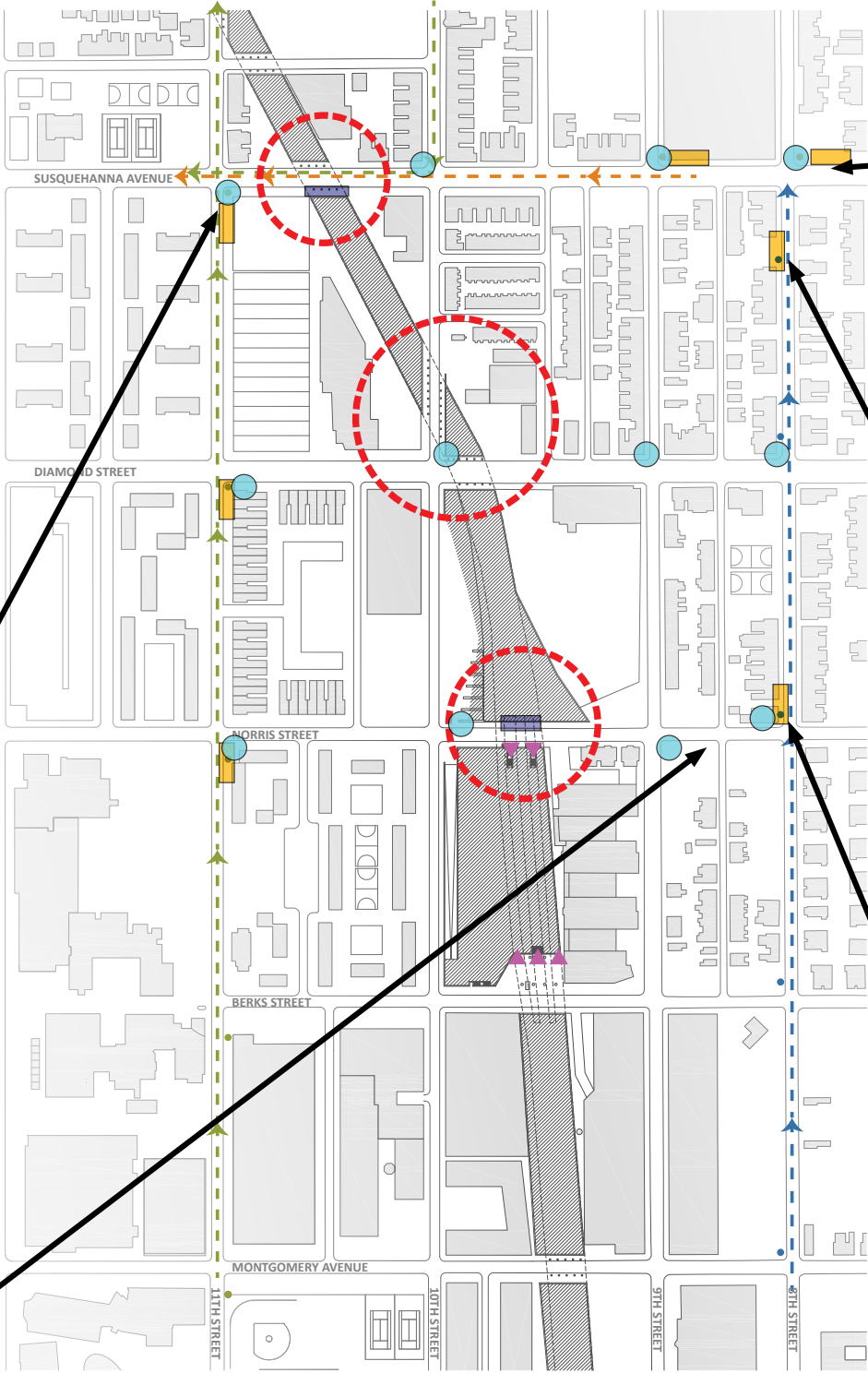


INTERSECTION AT 10TH AND NORRIS STREETS. LOOKING WEST ON NORRIS

BUS SHELTERS / BENCHES / TRASH

This diagram illustrates proposed locations for city standard designed bus shelters, bench and trash locations.

- BUS ROUTE 23
- BUS ROUTE 39
- BUS ROUTE 47
- BUS STOP - PROPOSED BENCH LOCATION
- PROPOSED BENCH LOCATION
- PROPOSED TRASH LOCATION
- ROUTE 23 STOP
- ROUTE 39 STOP
- ROUTE 47 STOP
- REGIONAL RAIL ENTRY

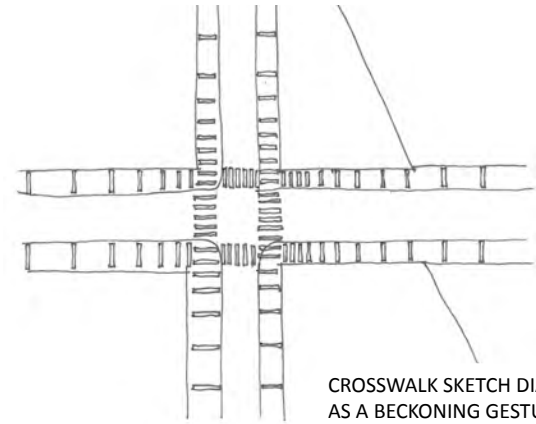
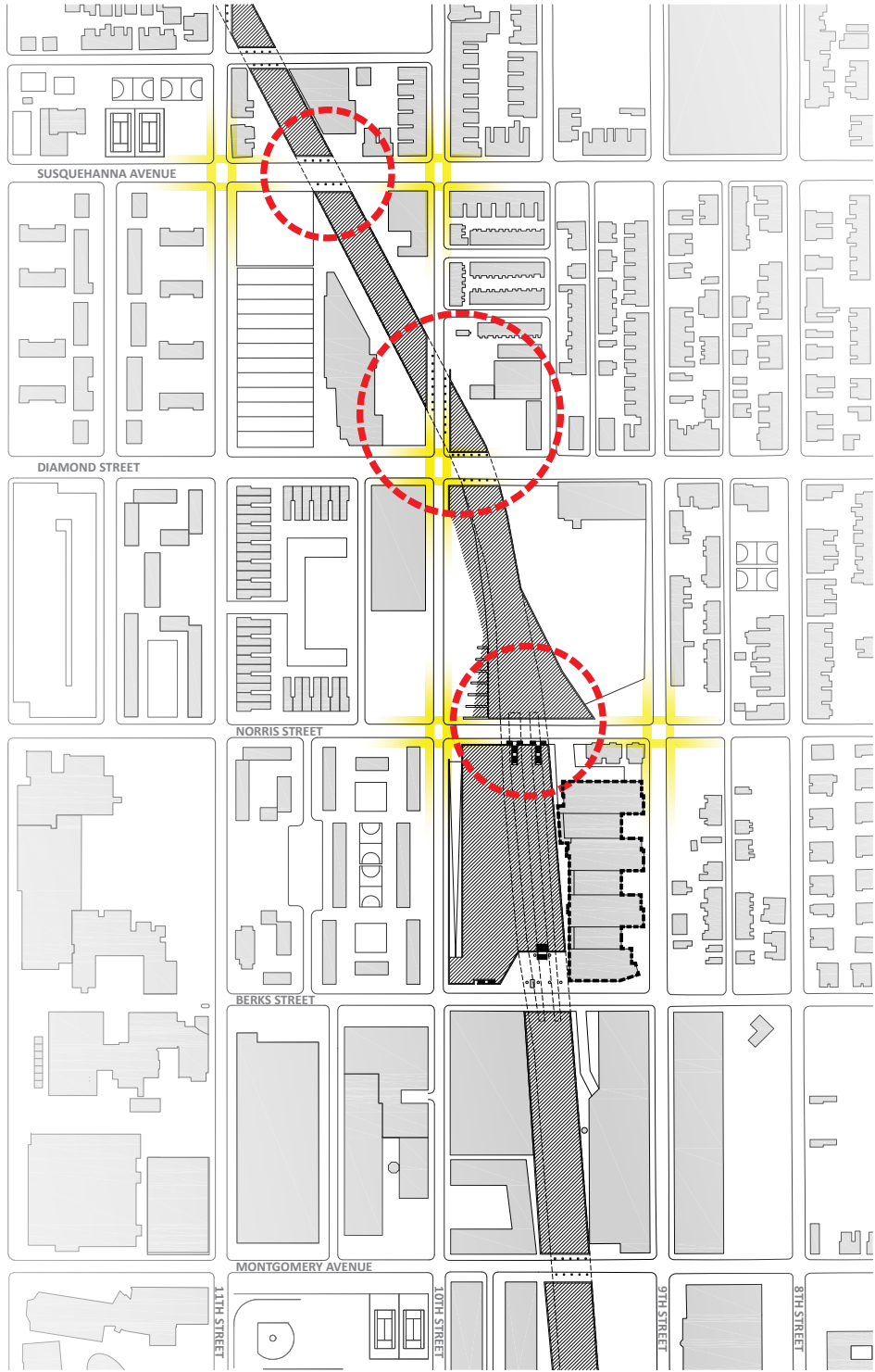
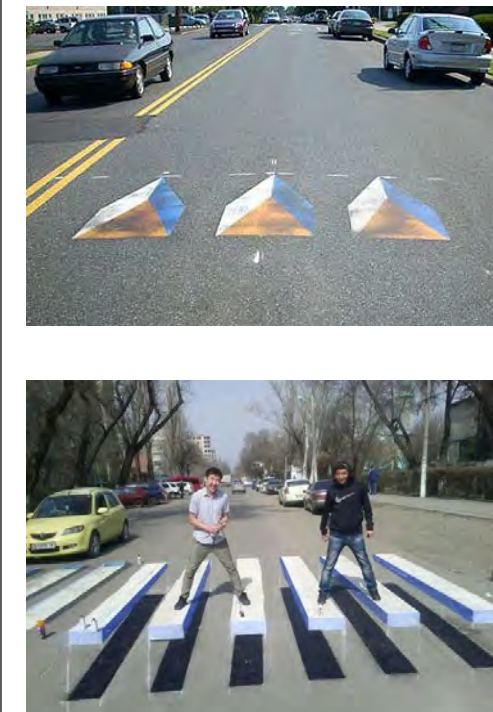


CROSSWALK PATTERNS

This diagram shows potential crosswalk locations where more colorful crosswalks could be implemented that appear to be 3-Dimensional. This accomplishes two goals: both slowing down traffic with the appearance of something within the roadway, and creating a zone at the intersections along the Viaduct, helping to reinforce the identity of these passages. The crosswalk continues on the adjacent sidewalks, with the stripes becoming a gradient, being spaced further and further apart. This beckons towards the adjacent viaduct sites. The design intent is to use a traffic-rated paint that provides less maintenance over time.

CROSSWALK RE-PAINTING

PRECEDENTS



CROSSWALK SKETCH DIAGRAM INDICATING GRADIENT PATTERN AS A BECKONING GESTURE TOWARD OTHER SITES



INTERSECTION AT 10TH AND DIAMOND STREETS. LOOKING EAST ON DIAMOND

GREENING

This diagram shows potential lots along the Viaduct for cleaning and greening. This includes both public and private land, and can be initiated through PHS.

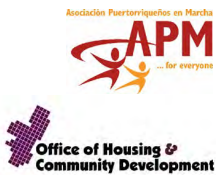
PUBLIC/PRIVATE LOTS WITH OPPORTUNITY FOR GREENING



COMMUNITY DESIGN COLLABORATIVE

Project number
2015-50
Date
June 6, 2016
Scale

Making Connections: Conceptual Design for Under the Viaduct
Site Infrastructure - Proposed Greening



The Community Design Collaborative's products are intended to provide visual concepts and to assist in project design and planning. All drawings are limited to conceptual design and are neither intended nor may be used for construction. Neither the Community Design Collaborative nor the project volunteers assume responsibility or liability for the technical accuracy of drawings or for any unauthorized use.

Conceptual Design

Opinion of Probable Cost Summary

► **Making Connections**
Conceptual Design for Under the Viaduct
2015-50

Description	Amount	Amount
Susquehanna Viaduct Underpass	\$ 388,707	\$ 384,747
Diamond Viaduct Underpass	\$ 1,091,145	\$ 715,275
Norris Viaduct Underpass	\$ 613,378	\$ 566,188
Total Estimated Cost	\$ 2,093,230	\$ 1,666,210 (with alternates)



Conceptual Design

► **Making Connections**
 Conceptual Design for Under the Viaduct
 2015-50

Opinion of Probable Cost

Detail - Norris Viaduct Underpass

Phase	Description	Quantity	Unit	Unit Cost	Amount
<u>NORRIS VIADUCT</u>					
Phase 1	Temporary Fencing, Barriers	1	LS	\$ 2,500.00	\$ 2,500
	Paint Stair Risers	336	LFN	5.00	1,680
	Paint Mural	1	LS	45,000.00	45,000
	Banners at Street Lights	7	EA	500.00	3,500
	Site Lighting - City Standard Street Lights w/ (2) Banner Arms	6	EA	8,500.00	51,000
	Electrical Conduit/Wiring for Site Lighting	1	LS	20,000.00	20,000
	Trash Receptacles, "Big Belly" or similar	2	EA	5,500.00	11,000
	Crosswalk / Sidewalk Painting	2	EA	5,000.00	10,000
	Subtotal				\$ 144,680
	Contingency	10%			14,468
	Subtotal				159,148
	General Requirements	20%			31,830
TOTAL ESTIMATED PHASE 1 COST					\$ 190,978
Phase 2	Temporary Fencing, Barriers	1	LS	\$ 10,000.00	\$ 10,000
	Lifts/Platforms for Access to Viaduct Underside	1	LS	30,000.00	30,000
	Metal Fin Trees, 20' High - 15' Dia (Painted w/ Metallic Paint)	8	EA	15,000.00	120,000
	Site Lighting - Linear LED Flex at Metal Fin Trees, 15' Long	960	LF	125.00	120,000
	- LED Floodlights	40	EA	800.00	32,000
	Custom Site Benches	2	EA	4,000.00	8,000
	Directional Speakers and Associated Wiring	6	EA	500.00	3,000
	Subtotal				\$ 320,000
	Contingency	10%			32,000
	Subtotal				352,000
	General Requirements	20%			70,400
TOTAL ESTIMATED PHASE 2 COST					\$ 422,400
TOTAL ESTIMATED COST					\$ 613,378

Conceptual Design

► **Making Connections**
Conceptual Design for Under the Viaduct
2015-50

Opinion of Probable Cost

Detail - Norris Viaduct Underpass

Alternate

Phase	Description w/Alternates	Quantity	Unit	Unit Cost	Amount
NORRIS VIADUCT (Alternates)					
Phase 1	Temporary Fencing, Barriers	1	LS	\$ 2,500.00	\$ 2,500
	Paint Stair Risers	336	LFN	5.00	1,680
	Paint Mural	1	LS	45,000.00	45,000
	Banners at Street Lights, Includes New Arm	7	EA	1,250.00	8,750
	Repair/Relocate Street Lights from Norris Homes	6	EA	2,500.00	15,000 w/New Footing
	Electrical Conduit/Wiring for Site Lighting	1	LS	20,000.00	20,000
	Trash Receptacles, "Big Belly" or similar	2	EA	5,500.00	11,000
	Crosswalk / Sidewalk Painting	2	EA	5,000.00	10,000
	Subtotal				\$ 113,930
	Contingency 10%				11,393
Subtotal					125,323
General Requirements 20%					25,065
TOTAL ESTIMATED PHASE 1 ALTERNATE COST					\$ 150,388
Phase 2	Temporary Fencing, Barriers	1	LS	\$ 10,000.00	\$ 10,000
	Lifts/Platforms for Access to Viaduct Underside	1	LS	30,000.00	30,000
	Metal Fin Trees, 20' High - 15' Dia (Painted w/ Metallic Paint)	8	EA	15,000.00	120,000
	Site Lighting - Linear LED Flex at Metal Fin Trees, 15' Long	960	LF	125.00	120,000
	- LED Floodlights	40	EA	800.00	32,000
	Standard Site Benches	2	EA	1,500.00	3,000
	Directional Speakers and Associated Wiring	6	EA	500.00	3,000
	Subtotal				\$ 315,000
	Contingency 10%				31,500
	Subtotal				346,500
General Requirements 20%					69,300
TOTAL ESTIMATED PHASE 2 ALTERNATE COST					\$ 415,800
TOTAL ESTIMATED ALTERNATE COST					\$ 566,188

Conceptual Design

► **Making Connections**
Conceptual Design for Under the Viaduct
2015-50

Opinion of Probable Cost

Detail - Diamond Viaduct Underpass

Phase	Description	Quantity	Unit	Unit Cost	Amount
DIAMOND VIADUCT					
Phase 1	Temporary Fencing, Barriers	1	LS	\$ 5,000.00	\$ 5,000
	RGB LED Lighting - 5' Long Fixture at Steel Girders (Pedestrian)	130	EA	750.00	97,500
	Electrical Conduit/Wiring for Site Lighting	1	LS	20,000.00	20,000
	Trash Receptacles, "Big Belly" or similar	6	EA	5,500.00	33,000
	Sawcut Concrete Sidewalk, Install Metal Inlays	2,100	LF	50.00	105,000
	Crosswalk / Sidewalk Painting	1	EA	5,000.00	5,000
	Custom Site Benches	1	EA	4,000.00	4,000
	Subtotal				\$ 269,500
	Contingency	10%			26,950
	Subtotal				296,450
	General Requirements	20%			59,290
	TOTAL ESTIMATED PHASE 1 COST				\$ 355,740
Phase 2	Temporary Fencing, Barriers	1	LS	\$ 10,000.00	\$ 10,000
	Lifts/Platforms for Access to Viaduct Underside	1	LS	25,000.00	25,000
	LED Lighting - 5' Long Fixture at Steel Girders (Street)	130	EA	750.00	97,500
	Subtotal				\$ 132,500
	Contingency	10%			13,250
	Subtotal				145,750
	General Requirements	20%			29,150
	TOTAL ESTIMATED PHASE 2 COST				\$ 174,900
Phase 3	Temporary Fencing, Barriers	1	LS	\$ 10,000.00	\$ 10,000
	Lifts/Platforms for Access to Viaduct Underside	1	LS	15,000.00	15,000
	Metal Fins at Wall Areas, 16" OC	3,750	LF	75.00	281,250
	Paint Existing Steel Beams/Underside of Viaduct	10,600	SF	10.00	106,000
	Banners at Existing Street Lights	6	EA	500.00	3,000
	Paint Metal Fins at Wall Areas	3,750	LF	2.50	9,375
	Subtotal				\$ 424,625
	Contingency	10%			42,463
	Subtotal				467,088
	General Requirements	20%			93,418
	TOTAL ESTIMATED PHASE 3 COST				\$ 560,505
TOTAL ESTIMATED COST					\$ 1,091,145

Conceptual Design

► **Making Connections**
Conceptual Design for Under the Viaduct
2015-50

Opinion of Probable Cost

Detail - Diamond Viaduct Underpass

Alternate

Phase	Description w/Alternates	Quantity	Unit	Unit Cost	Amount
DIAMOND VIADUCT (Alternates)					
Phase 1	Temporary Fencing, Barriers	1	LS	\$ 5,000.00	\$ 5,000
	White LED Lighting - 5' L Fixture w/ fixed colored lenses	130	EA	700.00	91,000
	Electrical Conduit/Wiring for Site Lighting	1	LS	20,000.00	20,000
	Trash Receptacles, "Big Belly" or similar	6	EA	5,500.00	33,000
	Eliminate metal inlays, Only sawcuts	2,100	LF	20.00	42,000
	Crosswalk / Sidewalk Painting	1	EA	5,000.00	5,000
	Standard Site Benches	1	EA	1,500.00	1,500
	Subtotal				\$ 197,500
	Contingency	10%			19,750
	Subtotal				217,250
	General Requirements	20%			43,450
	TOTAL ESTIMATED PHASE 1 ALTERNATE COST				\$ 260,700
Phase 2	Temporary Fencing, Barriers	1	LS	\$ 10,000.00	\$ 10,000
	Lifts/Platforms for Access to Viaduct Underside	1	LS	25,000.00	25,000
	White LED Lighting - 5' L Fixture w/ fixed colored lenses	130	EA	700.00	91,000
	Subtotal				\$ 126,000
	Contingency	10%			12,600
	Subtotal				138,600
	General Requirements	20%			27,720
	TOTAL ESTIMATED PHASE 2 ALTERNATE COST				\$ 166,320
Phase 3	Temporary Fencing, Barriers	1	LS	\$ 10,000.00	\$ 10,000
	Lifts/Platforms for Access to Viaduct Underside	1	LS	15,000.00	15,000
	Wood Framed Fins, 2x12 at 16" OC	3,750	LF	20.00	75,000
	Paint Existing Steel Beams/Underside of Viaduct	10,600	SF	10.00	106,000
	Banners at Existing Street Lights	6	EA	500.00	3,000
	Paint Wood Fins at Wall Areas	3,750	LF	2.50	9,375
	Subtotal				\$ 218,375
	Contingency	10%			21,838
	Subtotal				240,213
	General Requirements	20%			48,043
	TOTAL ESTIMATED PHASE 3 ALTERNATE COST				\$ 288,255
TOTAL ESTIMATED ALTERNATE COST					\$ 715,275

Conceptual Design

► **Making Connections**
Conceptual Design for Under the Viaduct
2015-50

Opinion of Probable Cost Detail - Susquehanna Viaduct Underpass

Phase	Description	Quantity	Unit	Unit Cost	Amount
SUSQUEHANNA VIADUCT					
Phase 1					
	Temporary Fencing, Barriers	1	LS	\$ 5,000.00	\$ 5,000
	Lifts/Platforms for Access to Viaduct Underside	1	LS	20,000.00	20,000
	Sidewalk Extension, Assume Approx 500 SF	1	LS	7,500.00	7,500
	Trash Receptacles, "Big Belly" or similar	2	EA	5,500.00	11,000
	Prep/Paint - Existing Steel Girders	285	LF	50.00	14,250
	- Existing Steel Beams/Underside of Viaduct	3,715	SF	10.00	37,150
	- Masonry Sidewalls Under Viaduct	2,250	SF	3.50	7,875
	Linear LED Lighting at Viaduct Underside	288	LF	150.00	43,200
	Electrical Conduit/Wiring for Site Lighting	1	LS	10,000.00	10,000
	Crosswalk / Sidewalk Painting	2	EA	5,000.00	10,000
	Paint Sidewalls (vertical bands/solid stripes)	1	LS	2,500.00	2,500
	Subtotal				\$ 168,475
	Contingency	10%			16,848
	Subtotal				185,323
	General Requirements	20%			37,065
	TOTAL ESTIMATED PHASE 1 COST				\$ 222,387
Phase 2					
	Sculptural Enclosures at Extq Columns (On Extq Pedestals)	8	EA	10,000.00	80,000
	- LED Backlight at Enclosures, (4) Per Enclosure	8	EA	3,500.00	28,000
	Subtotal				\$ 108,000
	Contingency	10%			10,800
	Subtotal				118,800
	General Requirements	20%			23,760
	TOTAL ESTIMATED PHASE 2 COST				\$ 142,560
Phase 3					
	Paint Mural at Sidewalls (Potted Plants, Gardens, Etc)	1	LS	10,000.00	10,000
	Custom Site Benches	2	EA	4,000.00	8,000
	Banners at Existing Street Lights	7	EA	500.00	3,500
	Subtotal				\$ 18,000
	Contingency	10%			1,800
	Subtotal				19,800
	General Requirements	20%			3,960
	TOTAL ESTIMATED PHASE 3 COST				\$ 23,760
TOTAL ESTIMATED COST					\$ 388,707

Conceptual Design

► **Making Connections**
Conceptual Design for Under the Viaduct
2015-50

Opinion of Probable Cost Detail - Susquehanna Viaduct Underpass Alternate

Phase	Description w/Alternates	Quantity	Unit	Unit Cost	Amount
SUSQUEHANNA VIADUCT (Alternates)					
Phase 1					
	Temporary Fencing, Barriers	1	LS	\$ 5,000.00	\$ 5,000
	Lifts/Platforms for Access to Viaduct Underside	1	LS	20,000.00	20,000
	Sidewalk Extension, Assume Approx 500 SF	1	LS	7,500.00	7,500
	Trash Receptacles, "Big Belly" or similar	2	EA	5,500.00	11,000
	Prep/Paint - Existing Steel Girders	285	LF	50.00	14,250
	- Existing Steel Beams/Underside of Viaduct	3,715	SF	10.00	37,150
	- Masonry Sidewalls Under Viaduct	2,250	SF	3.50	7,875
	Linear LED Lighting at Viaduct Underside	288	LF	150.00	43,200
	Electrical Conduit/Wiring for Site Lighting	1	LS	10,000.00	10,000
	Crosswalk / Sidewalk Painting	2	EA	5,000.00	10,000
	Paint Sidewalls (vertical bands/solid stripes)	1	LS	2,500.00	2,500
	Subtotal				\$ 168,475
	Contingency	10%			16,848
	Subtotal				185,323
	General Requirements	20%			37,065
	TOTAL ESTIMATED PHASE 1 COST				\$ 222,387
Phase 2					
	Sculptural Enclosures at Extg Columns (On Extg Pedestals)	8	EA	10,000.00	80,000
	- LED Backlight at Enclosures, (4) Per Enclosure	8	EA	3,500.00	28,000
	Subtotal				\$ 108,000
	Contingency	10%			10,800
	Subtotal				118,800
	General Requirements	20%			23,760
	TOTAL ESTIMATED PHASE 2 COST				\$ 142,560
Phase 3					
	Paint Mural at Sidewalls (Potted Plants, Gardens, Etc)	1	LS	10,000.00	10,000
	Standard Site Benches	1	EA	1,500.00	1,500
	Banners at Existing Street Lights	7	EA	500.00	3,500
	Subtotal				\$ 15,000
	Contingency	10%			1,500
	Subtotal				16,500
	General Requirements	20%			3,300
	TOTAL ESTIMATED PHASE 3 ALTERNATE COST				\$ 19,800
TOTAL ESTIMATED ALTERNATE COST					\$ 384,747

Description of Services



Making Connections

Conceptual Design for Under the Viaduct

2015-50

Value of Services Donated

Letter of Agreement

Client Application

Value of Services

► **Making Connections**
Conceptual Design for Under the Viaduct
2015-50

VOLUNTEER	PROFESSION	HOURS	RATE*	VALUE
Jake Shoemaker, AIA	Registered Architect	62	\$91	\$5,642
Natalie Amodei	Intern Architect	15	\$69	\$1,035
Jennifer Cappella	Interior Designer	41	\$89	\$3,649
Charlotte DiGiorgio, Assoc. AIA	Architectural Designer	17	\$69	\$1,173
Christina Dreibholz	Registered Architect	73	\$91	\$6,643
Peter Elsbeck, Assoc. AIA	Architectural Designer	38	\$69	\$2,622
Kate Hallinan	Interior Designer	8	\$69	\$552
Stacey Lindbloom	Intern Architect	28	\$69	\$1,932
Bonnie Netel	Intern Architect	45	\$69	\$3,105
Karen Skafte, ASLA	Reg. Landscape Architect	19	\$155	\$2,945
Brad Thornton, ASLA	Reg. Landscape Architect	44	\$110	\$4,840
Helen Diemer	Lighting Designer/Principal	15	\$230	\$3,450
David Seok	Lighting Designer	40	\$85	\$3,400
Lauren Tyler	Lighting Designer	33	\$85	\$2,805
Jennie Shanker	Artist	30	\$100	\$3,000
Jeff Carpenter	Artist	145	\$80	\$11,600
Lou Johnson	Cost Estimator	30	\$145	\$4,350
TOTAL VALUE OF DESIGN SERVICES (VOLUNTEERS)				\$62,743
STAFF				
Heidi Segall Levy, AIA	Senior Architect	160	\$100	\$16,000
TOTAL VALUE OF DESIGN SERVICES (COLLABORATIVE)				\$78,743

Billable Hourly Rates in the Philadelphia area for 2008

Principal (\$125 to \$220)

Senior Architect/Designer (\$100 to \$135)

Architect/Designer (\$70 to \$90)

Intern Architect/Designer (\$50 to \$65)

Senior Landscape Architectural Designer (\$100 to \$135)

Landscape Architectural Designer (\$70 to \$90)

Intern Landscape Architectural Designer (\$50 to \$65)

Planner (\$90 to \$115)

Historic Preservationist (\$90 to \$115)

Engineer (\$100 - \$150)

Cost Estimator (\$100 to \$135)

Senior Interior Designer (\$90 to \$135)

Interior Designer (\$50 to \$80)

Billable hourly rates are based on the 2005 American Institute of Architects Compensation Report and a survey of a representative sample of local design professionals. Revised in January 2008.



COMMUNITY DESIGN
COLLABORATIVE

May 31, 2015

Nilda Ruiz
President/CEO
Asociacion Puertorriquenos En Marcha
1900 N. 9th Street
Philadelphia, PA 19122

RE: Project 2015-50
Making Connections: Conceptual Design for Under the Viaduct

Dear Nilda:

We are pleased to inform you that your application for services has been accepted. It is our understanding that Asociacion Puertorriquenos En Marcha (APM), with support from the City of Philadelphia Office of Housing and Community Development (OHCD), is seeking assistance with developing design solutions to address the challenges presented by the SEPTA viaduct structure in the North Central neighborhood of Philadelphia. The goal is to provide improvement strategies which will reduce crime, increase safety, and encourage pedestrian access throughout the neighborhood as part of the Choice Neighborhoods Transformation Plan for North Central Philadelphia. The Transformation Plan is a set of coordinated strategies that outline a road map to neighborhood revitalization, linking new and rehabilitated housing with well-functioning services, schools, public assets, transportation and jobs.

This letter outlines the work that the Community Design Collaborative (Collaborative) will perform for APM through an enhanced design grant. Collaborative staff and design professionals volunteering through the Collaborative will provide the services and products listed below. Your project will require a team of 6 volunteers – 2 architects/urban designers/planners, and 2 landscape architects/architectural designers, one of whom will act as Lead Volunteer, a civil engineer/stormwater management consultant, and a cost estimator.

Collaborative staff and volunteers will provide the following products and services:

1. Attendance by the volunteer team at one initial meeting/site visit with a limited number of representatives from APM and OHCD. In addition to being an opportunity for the volunteers to become familiar with the focus area, this meeting also provides an opportunity for APM and OHCD to share background information, including their organizations' histories, programs and services, as well as their goals and priorities for the design grant process.
2. Attendance by the volunteer team at up to five (5) meetings with key stakeholders, as identified by APM and OHCD, which may include Norris Resident Council, SEPTA, Mural Arts, Temple University, and the Mayor's Office of Transportation and Utilities, as appropriate, in order to better understand design parameters and to coordinate efforts.
3. Attendance by the volunteer team at three (3) meetings with a community task force, as arranged by APM and OHCD. The first will provide an opportunity: to introduce the project; for task force members to become familiar with each other; and for the group to take a walking tour of the focus area while reflecting on their thoughts and ideas. The second will focus on a discussion of the groups' issues and concerns in order to reach a consensus in terms of their priorities for improving the areas under and adjacent to the SEPTA viaduct. The volunteers will use the reflections from the first meeting and the direction given at the second meeting, **both as documented in meeting minutes provided by APM**, as a basis for their preliminary design. At the third meeting, the volunteers will present their preliminary scheme to the task force for feedback. The volunteers will use the direction given at this meeting, **as documented in meeting minutes provided by APM**, as a basis for their completion of the conceptual design.

4. Attendance and presentation by the volunteer team at two reviews – a mid-review and a final draft review - with a jury of stakeholders and experts, as coordinated by APM, OHCD, and the Collaborative, to review the team's preliminary design prior to presenting to the community task force and just prior to the completion of the final design.
5. Attendance by staff and the volunteer team at a follow-up meeting at the Collaborative to review the final report with representatives from APM and OHCD.
6. As requested by APM and OHCD, the volunteer team may make one presentation of their final proposal to either a group of stakeholders or to the broad community immediately following completion of the final products.
7. An 8 ½" x 11" bound report including:
 - a) Written Introduction: Providing background information on the client organizations, the Choice Neighborhoods Transformation Plan, the community task force, and the Collaborative project
 - b) Project Location Map: Indicating the location of the focus area within the city
 - c) Photographs: Of the focus area and the immediate context
 - d) Site Context Plan: Existing site plan based on plans as provided by APM and the Planning Commission Building and Lot line Map, and drawn to an appropriate scale to be presented in 11" x 17" format. This plan will show the focus area with key intersections (9th and Berks; 10th and Norris; 11th and Susquehanna) within its surrounding context and will indicate land use including residential, commercial, institutional, recreational open space, etc. Key existing infrastructure, institutions, and businesses, are to be identified. In the areas of the key intersections, ownership of key parcels may also be indicated. In addition, in those areas, the plan will also include all aspects of the viaduct, streets, sidewalks, driveways, service areas, fences, landscaping, and lighting. This plan may also indicate potential opportunities and constraints for the focus area.
 - e) Proposed Conceptual Color-Rendered Site Plan: Based on the site context plan and to be drawn to an appropriate scale to be presented in 11" x 17" format, this plan is to incorporate the desired improvements as requested by the task force and may represent a prototypical design, as well as a design which can be implemented in phases. The plan will focus on the key intersections, but will also consider the opportunity for connection between the intersections while addressing the potential for improved pedestrian circulation, gathering spaces, trees and other plantings, lighting, site furnishings, murals, signage, etc. The plan may also address stormwater management. The plan is also to indicate proposed development within the focus area.
 - f) Conceptual Plan Detail Drawings: As appropriate, to illustrate specific aspects of the overall site plan and to be drawn to an appropriate scale to be presented in 11" x 17" format.
 - g) Conceptual Color-rendered perspective: To illustrate an aspect of the proposed design and to be presented in 11" x 17" format.
 - h) Phasing, Implementation and Maintenance Plan: Recommendations will be provided for phasing and implementation of the conceptual design, as appropriate, identifying which portions may be done by volunteer labor. In addition, a description of maintenance tasks will be provided for the improvements, also identifying which tasks may be provided by volunteers and which may need support from outside groups.

- i) Opinion of Probable Cost: A preliminary cost estimate based on the proposed conceptual plan. The estimate will indicate labor and materials separately and will reflect the proposed phasing, implementation and maintenance plan.

8. Collaborative staff will plan and coordinate all aspects of one program event, which is open to the public, addressing the topic of the design of spaces under elevated infrastructure and highlighting similar efforts in other locations.

APM (with assistance from OHCD) will be responsible for providing the following:

1. Attendance at one initial meeting/site visit with the Collaborative volunteer team, during which APM and OHCD will have an opportunity to share background information, including their organizations' histories, programs and services, as well as their goals and priorities for the design grant process.
2. Coordination of, and attendance at, up to five (5) meetings with key stakeholders, as identified by APM and OHCD, which may include Norris Resident Council, SEPTA, Mural Arts, Temple University, and Mayor's Office of Transportation and Utilities, as appropriate, in order to better understand design parameters and to coordinate efforts.
3. Creation and coordination of the community task force; ***a list of the task force members is to be provided to the Collaborative prior to the in-house team kick-off meeting***
4. Scheduling of, securing location for, and attendance at, all meetings with the Collaborative volunteers and the task force
5. Written information about the history of the organizations, the Choice Neighborhoods Transformation Plan, and the community task force to be included in the introduction of the final report
6. A copy of all proposed plans of the focus area including the Choice Neighborhood Transformation Plan, plans done by WRT, PHA, Jonathan Rose Companies LLC, KSK, Temple University (master plan and landscape plan) and Mural Arts
7. Information regarding parcel ownership, as appropriate, within the focus area
8. Verbal introduction at the community task force meetings to include: welcoming everyone, explaining why task force members have been invited, explanation of the purpose of the design grant and introduction of the Collaborative volunteer team
9. A prioritized list of desired improvements (to be developed with the volunteer team)
10. ***Meeting minutes and attendance sheet from the three task force meetings***
11. Assistance with identification and coordination of a jury of stakeholders/experts to review the team's work prior to presenting to the task force and prior to the completion of the final design
12. Assistance with the planning, coordination and promotion of one event addressing the topic of the design of spaces under elevated infrastructure and highlighting similar efforts in other locations
13. Attendance at a follow-up meeting at the Collaborative to review the final report

14. Completion of a questionnaire evaluating the performance of the Collaborative staff and volunteers

We expect this work to take approximately six to eight (6-8) months to complete after the volunteer team gets started. It must be noted that inclement weather and unforeseen circumstances in a volunteer's schedule could delay this project.

Work on your project will begin after this letter of agreement is signed and returned. ***This letter must be returned within thirty (30) days of the date of this letter to remain eligible for the services described.***

The Collaborative's products are intended to provide visual concepts and to assist in the preliminary phase of project design and planning. All drawings and construction budgeting figures are limited to conceptual design and are neither intended nor may be used for construction.

Although we will endeavor to provide the highest quality volunteer services for this project, the Community Design Collaborative and our project volunteers assume no responsibility or liability for our services including the recommendations of our volunteers, the technical accuracy of our work product or for any unauthorized use. In addition, APM agrees to indemnify, defend and hold harmless the Collaborative and its officers, directors, employees, agents and volunteers (including, but not limited to, any firm or other business entity which provides services or products as a volunteer, or which permits its employees to provide volunteer services or products) (collectively the "Collaborative volunteers") from and against all claims, demands, losses, suits, damages and expenses (including attorneys' fees and court or other costs) arising from any act or omission, or services or products, provided by Collaborative volunteers under this letter of agreement or otherwise.

The Collaborative shall be deemed the author of all reports, drawings, specifications and other documents prepared by the Collaborative volunteers for this project and, as such, shall retain all common law, statutory and other reserved rights, including copyrights, in and to them. Your organization will be provided with copies of the final report, which you may retain and use for information, reference and distribution in connection with this project. You may not, however, alter, revise or amend the report, either directly or indirectly, or use it for any purpose other than for this project, without the express written consent of the Collaborative. The Collaborative shall have the right to use the report, and to distribute copies of it, for educational, promotional or other purposes.

If you have any questions regarding the agreement outlined above, please contact me at the Collaborative offices at 215-587-9290.

Sincerely,






Accepted and agreed:

Heidi Segall Levy, AIA
Director of Design Services
Community Design Collaborative

Nilda Ruiz	Date
President/CEO	
Asociacion Puertorriquenos En Marcha	

Cc: Rose Gray, Vice President, Community & Economic Development, APM
Melissa Long, Deputy Director, City of Philadelphia Office of Housing and Community Development

"Design Grant Application" Response detail

Attachments:  501C-3.pdf,  Board List as of 7 1 2014 to 6 30 15 Race Gender Final List.doc,  APM Audit Report FY14-final.pdf,  articles of incorporation APM.pdf,  2015 Spring Quarterly Newsletter (1).pub

CONTACT PERSON INFORMATION | Please provide a contact from your organization who will be the point of contact for this project.

First name Last name
Nilda Ruiz

Title Role
President /CEO Staff

Work email Personal email Where do you prefer to receive email?
Nilda.Ruiz@apmphila.org Nilda.Ruiz@apmphila.oirg Work

Home phone Work phone Ext. Cell phone Preferred phone:
267-808-5340 267-296-7301 215-384-3159 Work

Preferred mailing address for this project: Street City State Zip code Type of address
1900 North 9th Street Philadelphia Pennsylvania 19122 Work

ORGANIZATION INFORMATION

Organization
Asociacion Puertorriquenos En Marcha

Street City State Zip code
1900 North 9th Street Philadelphia Pennsylvania 19122

Organization phone Fax
2678085340 2676878917

Website
www.apmphila.org

Neighborhood(s) served Neighborhood if other
- North Central

Location of main office Location if other
- North Central

Council District of organization Congressional District of organization
District 5 1st District

Organization Census Tract
Asociacion Puertorriquenos En Marcha

Briefly state the mission of your organization
To help families achieve their greatest potential.

Briefly describe the services provided by your organization
APM is a multi-faceted social, human, and health service organization celebrating its 43 years serving the greater Philadelphia region. As part of APM's mission is its community and economic development arm whose purpose is to implement a long term strategic plan to revitalize a section of North Central Philadelphia. This plan is based on the vision of the community residents, stakeholders APM staff and board members. In 2014 APM's targeted neighborhood was chosen as a Choice Neighborhood and APM

serves as its "people" lead. Combining APM's Quality of Life Plan with the physical transformation of the community is essential to creating a sustainable and healthy environment where residents can live work and play thus we view planning workshops as an integral part of our revitalization process.

First Name Last Name

Nilda Ruiz

Does your organization have a board of directors?

Yes

What year was your organization founded?

1971

Does your organization have 501(c)(3) status? What year was your 501(c)(3) status established?

Yes

1971

Total number of full time staff Total number of part time staff Total number of volunteers

248

10

65

Operating budget for current year

Over 5,000,000

What are your organization's current funding sources?

City of Philadelphia, State of Pa , Federal government, various foundations and financial organizations.

Number of clients served last fiscal year

10000

Which organizations, public agencies, and/or elected officials have assisted your organization?

State Senator Robert Casey, Senator Shirley Kitchen, Councilman Darrell Clarke, Councilwomen Quinoes , City of Philadelphia, OHCD State of Pennsylvania PHFA and DCED, City of Philadelphia Commerce Department, Housing and Urban Development, Philadelphia Horticultural Society, Philadelphia Corporation for Again, LISC, TRF.

Has your organization ever received services from an architect, landscape architect, or engineer?

Yes

If yes, identify who and describe services. If no, write in N/A.

Compass, Connector, Catalyst RE-imagining 8th and Berks Design Charrette - April 2014

Team included BWA Architects, Atrium Design, Viridian Landscape Studio , Lamar Wilson , the Community and other organizations. The project determined that the best uses for the site at 8th and Berks included senior housing, for sale housing, and commercial uses.

Has your organization completed other capital development projects? List projects with completion dates.

Since 1990 APM has leveraged over \$140 million dollars of funding for physical development projects .

The most recent 2002-2011 the development of 150 for sale homes including the Sheridan Street project which was the result of a charrette in partnership with the design collaborative. Most recent Paseo Verde a 48 Million dollar mixed use/mixed income Transit Oriented Development Project.

PROJECT INFORMATION

Project title

North Central Choice- SEPTA Viaduct Improvement Project

Project Scope: Briefly describe the project's scope, timetable, and importance to your organization

While the SEPTA viaduct is one of the Choice Neighborhood's greatest assets, it is also one of the neighborhood's greatest challenges. The viaduct, which cuts the neighborhood in half, serves as both a physical and psychological barrier that prevents neighborhood and Norris Apartment residents from accessing all the neighborhood amenities. APM is proposing that the Community Design Collaborative complete a community-based design analysis at key interstecions along the viaduct -- at 9th and Berks; 10th and Norris; and 11th and Susquehanna -- to identify improvement strategies to reduce crime and increase safety encourage pedestrian access to all parts of the North Central Choice Neighborhood. It is anticipated that the design process with the previously identified community stakeholders begin in July 2015 and end December 2015.

What preliminary design services are needed?
Charrette or design workshops

Project Address: Street City State Zip Code
1900 North 10th Street Temple Rail Station Viaduct Philadelphia PA - Pennsylvania 19122

Location of project Location if other
- North Central Lower North Philadelphia

Project Council District Project Congressional District
District 5 1st District

Project Census Tract
156

Project Type
Other

Project lot, building size, and/or project area
Key points at Viaduct uns a full City block North and South

Current use of site
blighted, trash strewn and crime ridden

Proposed use of site
cleaned, lighted, inviting use of public spac

What is the current ownership status of the property?
City of Philadelphia property

If you lease, note the property owner and terms of the lease
No plans to lease - will work with SEPTA - to improve this problematic space with City resources

If you plan to acquire, list the current property owner(s) and describe your acquisition strategy and timetable.
No plans to acquire -the viaduct is owned by SEPTA and is in the middle of the Choice Neighborhood Revitalization zone.

Are there drawings available for this project?
No

Proposed project budget
50000

How did you determine this budget?
past planning CDC projects

Is there funding available for the project?
Yes

If yes, how much funding is currently available for the project?
50000

If yes, what is the funding source?
City Funded

What other funding strategies are being considered?
not needed

Are there fundraising deadlines or other time constraints related to this project?
This project would be a part of the HUD Choice Neighborhood

Has your organization contacted other groups, consultants, or contractors to assist you with the project?
Mural Arts, Norris Residents , Temple University, SEPTA, City of Philadelphia , APM NAC and SCI and communitiy residents.

Who referred you to the Community Design Collaborative?
Melissa Long

What organization are they affiliated with?
City of Philadelphia Office of Housing and Community Development

DOCUMENTS UPLOAD

- (1) Articles of Incorporation
articles of incorporation APM.pdf
- (2) IRS 501(c)(3) letter for your organization or fiscal sponsor
501C-3.pdf
- (3) Board Roster
Board List as of 7 1 2014 to 6 30 15 Race Gender Final List.doc
- (4) IRS Form 990 (or most recent financial statement if your organization does not submit Form 990)
APM Audit Report FY14-final.pdf
- (5) One example of a recent newsletter or other material
2015 Spring Quarterly Newsletter (1).pub

TERMS OF AGREEMENT | Please check to indicate that you have read, understand, and agree with the following:

- If selected to receive a Design Grant, your organization agrees to pay the administrative fee prior to the start of the project to offset direct costs incurred by the Collaborative. This fee is due upon notification of the selection and must accompany the signed Letter of Agreement. (Please do not submit the fee with this application.)
- Your organization is prepared to work closely with the Collaborative and its volunteers for the duration of the service grant.
- The Collaborative's products are intended to provide visual concepts and to assist in project design and planning. All drawings are limited to conceptual design and are neither intended nor may be used for construction. Neither the Collaborative nor its volunteers assume responsibility or liability for the technical accuracy of drawings or any unauthorized use.
- Your organization will receive copies of the final report, which you can use for information, reference, and distribution in connection with the project. You may not alter, revise or amend the report, either directly or indirectly, without the express written consent of the Collaborative.
- The Collaborative has the right to use the final report and to distribute copies for educational, promotional or other purposes. The Collaborative shall be deemed the author of all reports, drawings, specifications and other documents prepared by the Collaborative volunteers for the project.
- Your organization will keep the Collaborative informed about project milestones, including notification of any implementation or construction funding, and will invite representatives of the Collaborative to events related to the project such as ground breakings and opening ceremonies.
- Your organization will include the statement, "This project was made possible in part by the Community Design Collaborative" in all press and marketing materials related to the project, include the Collaborative logo wherever possible, and obtain prior approval from the Collaborative before distributing press and marketing materials related to the project.

E-signature | By entering my name, this constitutes my electronic signature on this application for preliminary design services.

Nilda Ruiz

Organization Authorization

- This application has been approved for submission and I am authorized to do so on behalf of the organization.

► 1216 Arch Street | First Floor | Philadelphia, PA 19107
ph 215.587.9290 | fx 215.587.9277
cdesignnc.org

The Community Design Collaborative

is a community design center that provides *pro bono* predevelopment design services to nonprofit organizations, offers unique volunteer opportunities for design professionals, and raises awareness about the importance of design in community revitalization.